

TRAFFIC CONTROL (700)

- 700.... Reserved
- 701.... Lane Roadway with One Lane Closed
- 702.... Lane Roadway Partial Lane Closure
- 703.... Shoulder Work
- 704.... Lane Right Lane Closed
- 705.... Lane Left Turn Lane Closed
- 706.... Center of Intersection Work
- 707.... Lane Roadway Left Lane Closed
- 708.... Lane at Intersection Right Lane Closed
- 709.... Full Street Closure
- 710.... 5 Lane Multilane Closure
- 711.... 2 Way Left Turn Lane Closure
- 712.... 5 Lane Left Lane Closure
- 713.... Traffic Control Devices
- 714-799 Reserved

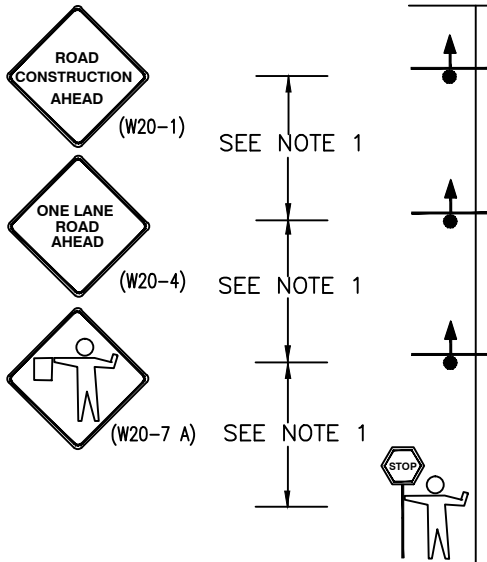


TABLE A

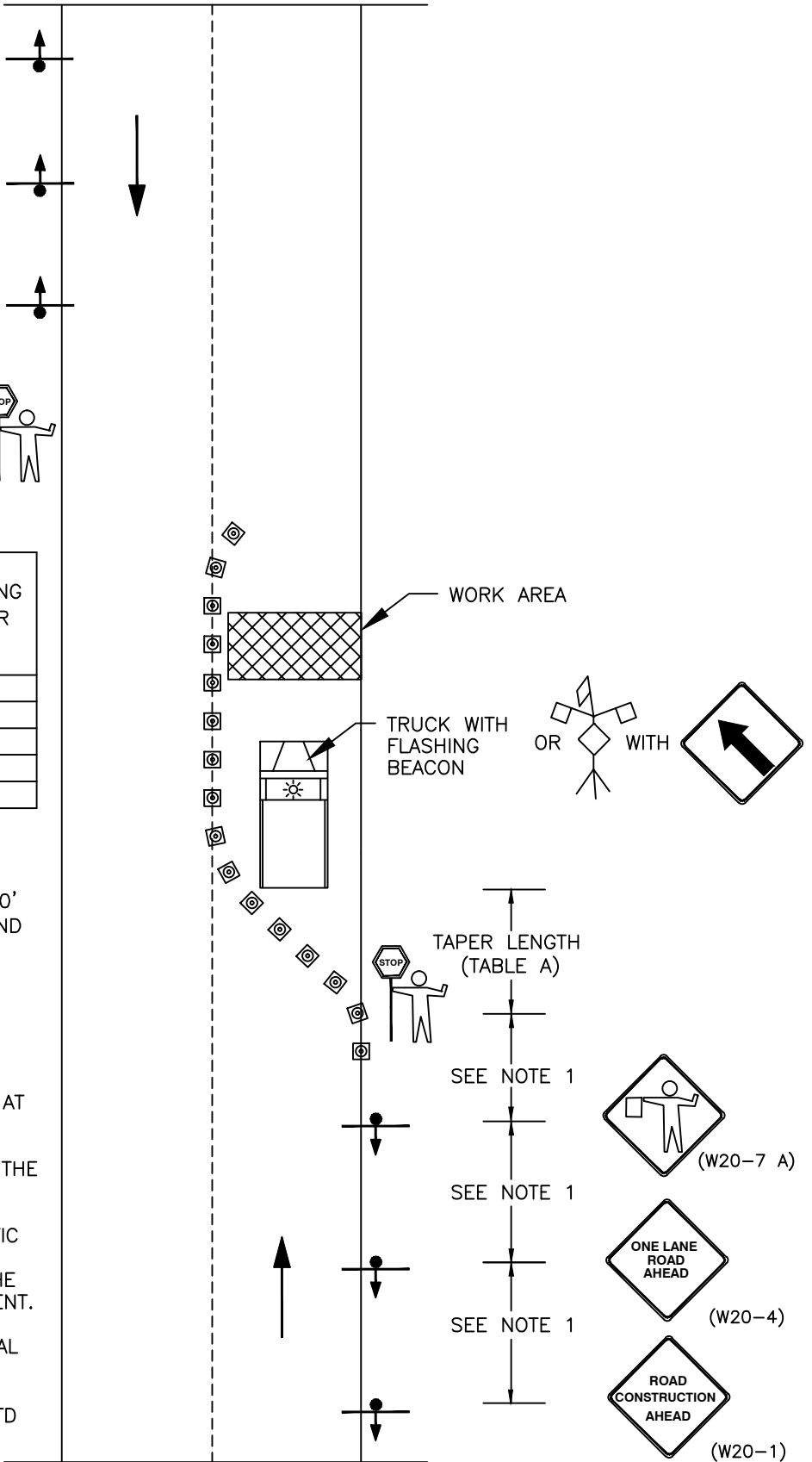
SPEED (MPH)	TAPER LENGTH (FT)		CONE SPACING ALONG TAPER (FT)
	OFFSET WIDTH		
	10'	12'	
25	105	125	25
30	150	180	30
35	205	245	35
40	270	320	40
45	450	540	45

NOTE:

1 DISTANCE BETWEEN SIGNS SHALL BE 100' FOR RESIDENTIAL STREETS (25 MPH), AND 200' FOR ARTERIAL ROADWAYS

LEGEND:

- FLASHING BEACON SHALL BE INSTALLED AT EACH SIGN FOR NIGHT-TIME USE.
- DISTANCES MAY VARY AS APPROVED BY THE ENGINEER.
- FLAGGERS REQUIRED TO CONTROL TRAFFIC WHENEVER THE CONTRACTOR MUST INTERRUPT TRAFFIC FLOW TO ACCESS THE WORK SITE WITH MATERIALS OR EQUIPMENT.
- SIGN SIZE PER MUTCD OR PER APPROVAL OF CITY ENGINEER
- ⊗ CONE OR CHANNELIZING DEVICE (SEE STD 713)



City of Bothell

City of Bothell
PUBLIC WORKS DEPARTMENT

Approved By:

[Signature]
City Engineer

TRAFFIC CONTROL PLAN
2 LANE ROADWAY
WITH ONE LANE CLOSED

Standard
Detail

701

Revision Date
Nov, 2013



(W20-1)



(W5-1)

SEE NOTE 1

SEE NOTE 1

TAPER LENGTH
(TABLE A)

TABLE A

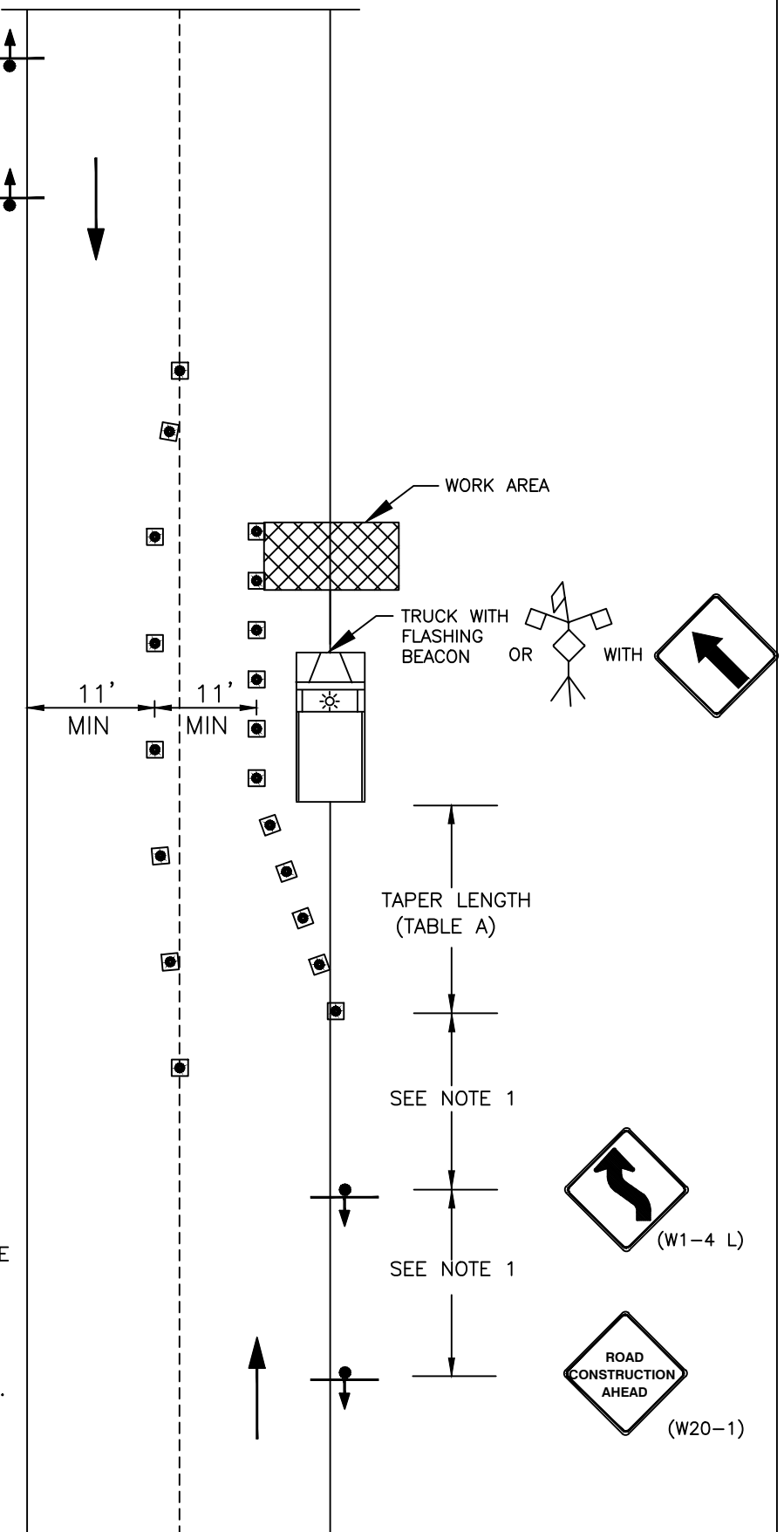
SPEED (MPH)	TAPER LENGTH (FT)		CONE SPACING ALONG TAPER (FT)
	OFFSET WIDTH		
	10'	12'	
25	105	125	25
30	150	180	30
35	205	245	35
40	270	320	40
45	450	540	45

NOTE:

¹ DISTANCE BETWEEN SIGNS SHALL BE 100' FOR RESIDENTIAL STREETS (25 MPH), AND 200' FOR ARTERIAL ROADWAYS

LEGEND:

- FLASHING BEACON SHALL BE INSTALLED AT EACH SIGN FOR NIGHT-TIME USE.
- DISTANCES MAY VARY AS APPROVED BY THE ENGINEER.
- FLAGGERS REQUIRED TO CONTROL TRAFFIC WHENEVER THE CONTRACTOR MUST INTERRUPT TRAFFIC FLOW TO ACCESS THE WORK SITE WITH MATERIALS OR EQUIPMENT.
- SIGN SIZE PER MUTCD.
- ⊠ CONE OR CHANNELIZING DEVICE (SEE STD 713)



City of Bothell

City of Bothell

PUBLIC WORKS DEPARTMENT

Approved By:

[Signature]
City Engineer

**TRAFFIC CONTROL PLAN
2 LANE ROADWAY
PARTIAL LANE CLOSURE**

Standard
Detail

702

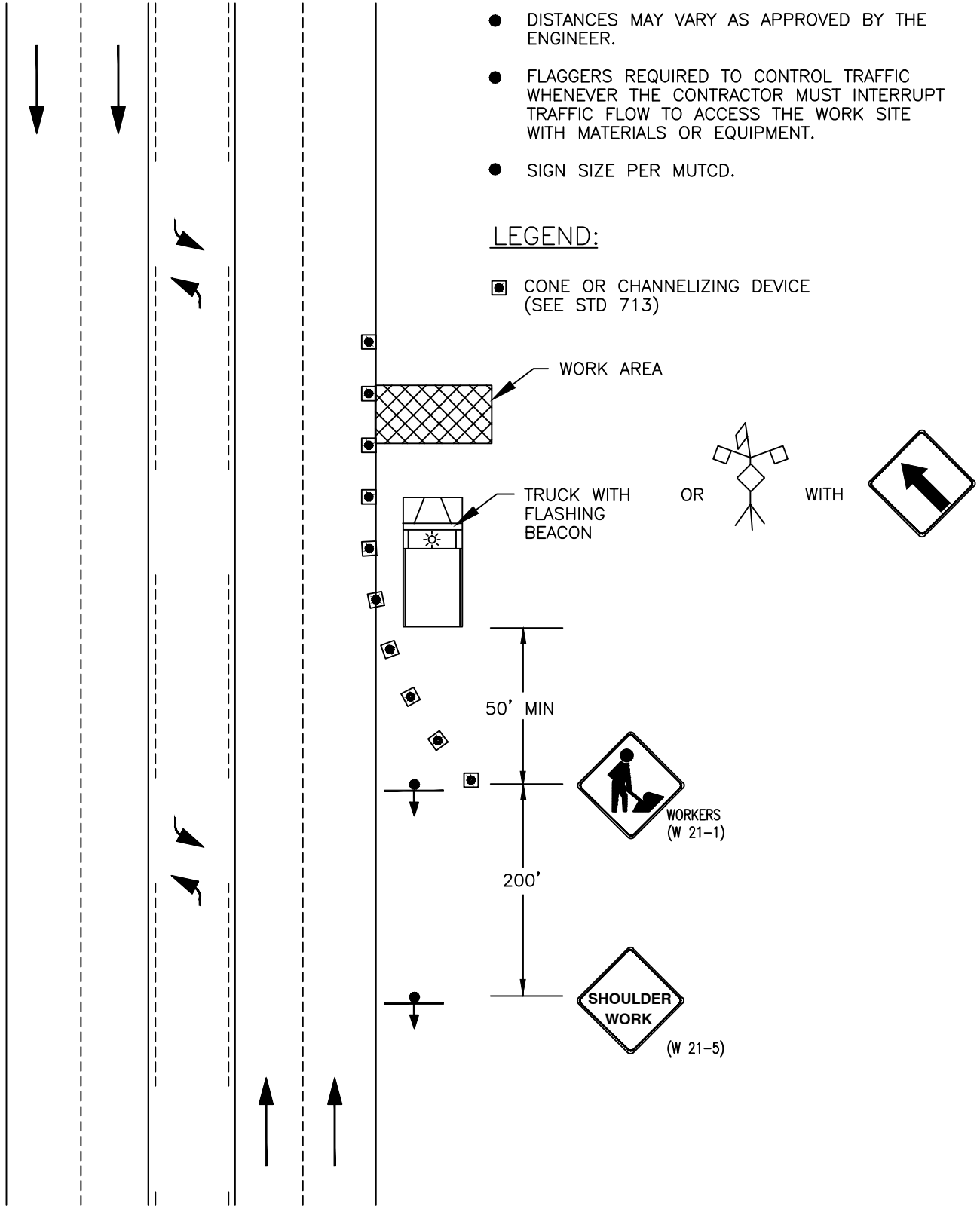
Revision Date
Nov, 2013

NOTE:

- FLASHING BEACON SHALL BE INSTALLED AT EACH SIGN FOR NIGHT-TIME USE.
- DISTANCES MAY VARY AS APPROVED BY THE ENGINEER.
- FLAGGERS REQUIRED TO CONTROL TRAFFIC WHENEVER THE CONTRACTOR MUST INTERRUPT TRAFFIC FLOW TO ACCESS THE WORK SITE WITH MATERIALS OR EQUIPMENT.
- SIGN SIZE PER MUTCD.

LEGEND:

- CONE OR CHANNELIZING DEVICE (SEE STD 713)



City of Bothell™

City of Bothell
PUBLIC WORKS DEPARTMENT

Approved By:

[Signature]
 City Engineer

TRAFFIC CONTROL
 PLAN
 SHOULDER WORK

Standard
 Detail

703

Revision Date
 Nov, 2013

LEGEND:

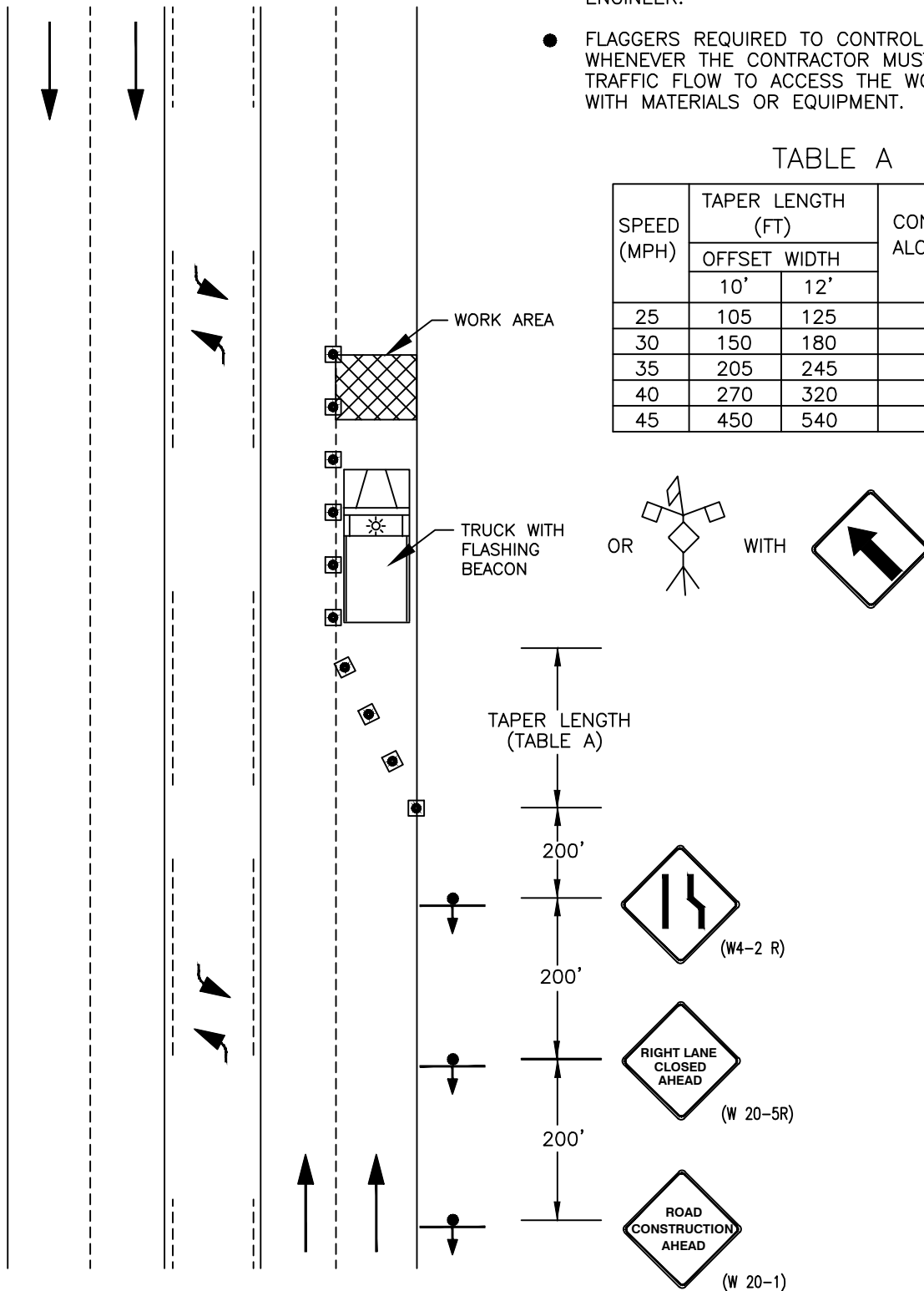
■ CONE OR CHANNELIZING DEVICE
(SEE STD 713)

NOTE:

- FLASHING BEACON SHALL BE INSTALLED AT EACH SIGN FOR NIGHT-TIME USE.
- DISTANCES MAY VARY AS APPROVED BY THE ENGINEER.
- FLAGGERS REQUIRED TO CONTROL TRAFFIC WHENEVER THE CONTRACTOR MUST INTERRUPT TRAFFIC FLOW TO ACCESS THE WORK SITE WITH MATERIALS OR EQUIPMENT.

TABLE A

SPEED (MPH)	TAPER LENGTH (FT)		CONE SPACING ALONG TAPER (FT)
	OFFSET WIDTH		
	10'	12'	
25	105	125	25
30	150	180	30
35	205	245	35
40	270	320	40
45	450	540	45



City of Bothell

City of Bothell
PUBLIC WORKS DEPARTMENT

Approved By:
[Signature]
City Engineer

**TRAFFIC CONTROL
PLAN - 5 LANE
RIGHT LANE CLOSED**

Standard
Detail

704

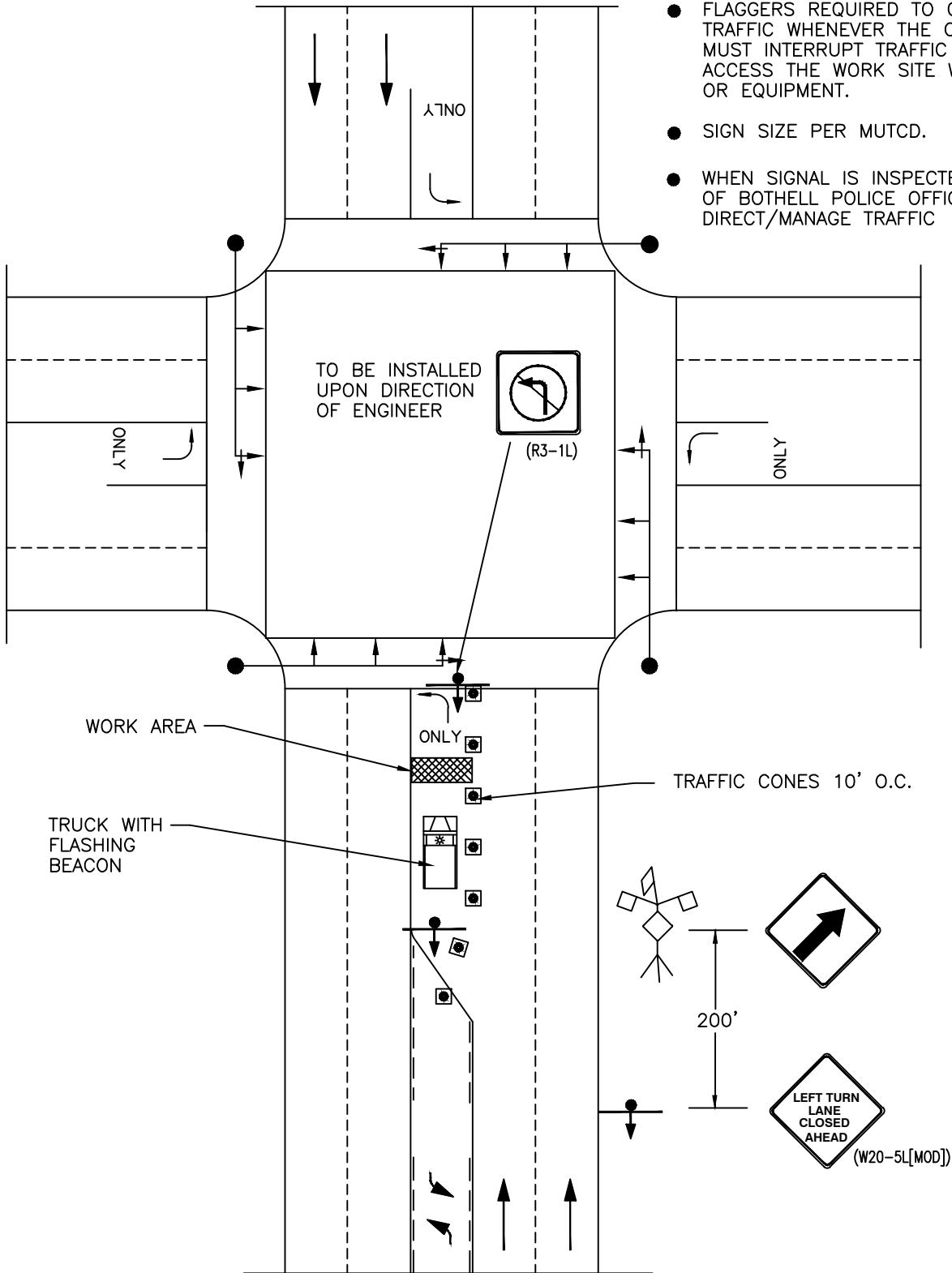
Revision Date
Nov, 2013

LEGEND:

- CONE OR CHANNELIZING DEVICE (SEE STD 713)

NOTE:

- FLASHING BEACON SHALL BE INSTALLED AT EACH SIGN FOR NIGHT-TIME USE.
- DISTANCES MAY VARY AS APPROVED BY THE ENGINEER.
- FLAGGERS REQUIRED TO CONTROL TRAFFIC WHENEVER THE CONTRACTOR MUST INTERRUPT TRAFFIC FLOW TO ACCESS THE WORK SITE WITH MATERIALS OR EQUIPMENT.
- SIGN SIZE PER MUTCD.
- WHEN SIGNAL IS INSPECTED, A CITY OF BOTHELL POLICE OFFICER SHALL DIRECT/MANAGE TRAFFIC



City of Bothell™

City of Bothell
PUBLIC WORKS DEPARTMENT

Approved By:
[Signature]
 City Engineer

**TRAFFIC CONTROL
 PLAN - 5 LANE - LEFT
 TURN LANE CLOSED**

Standard
 Detail

705

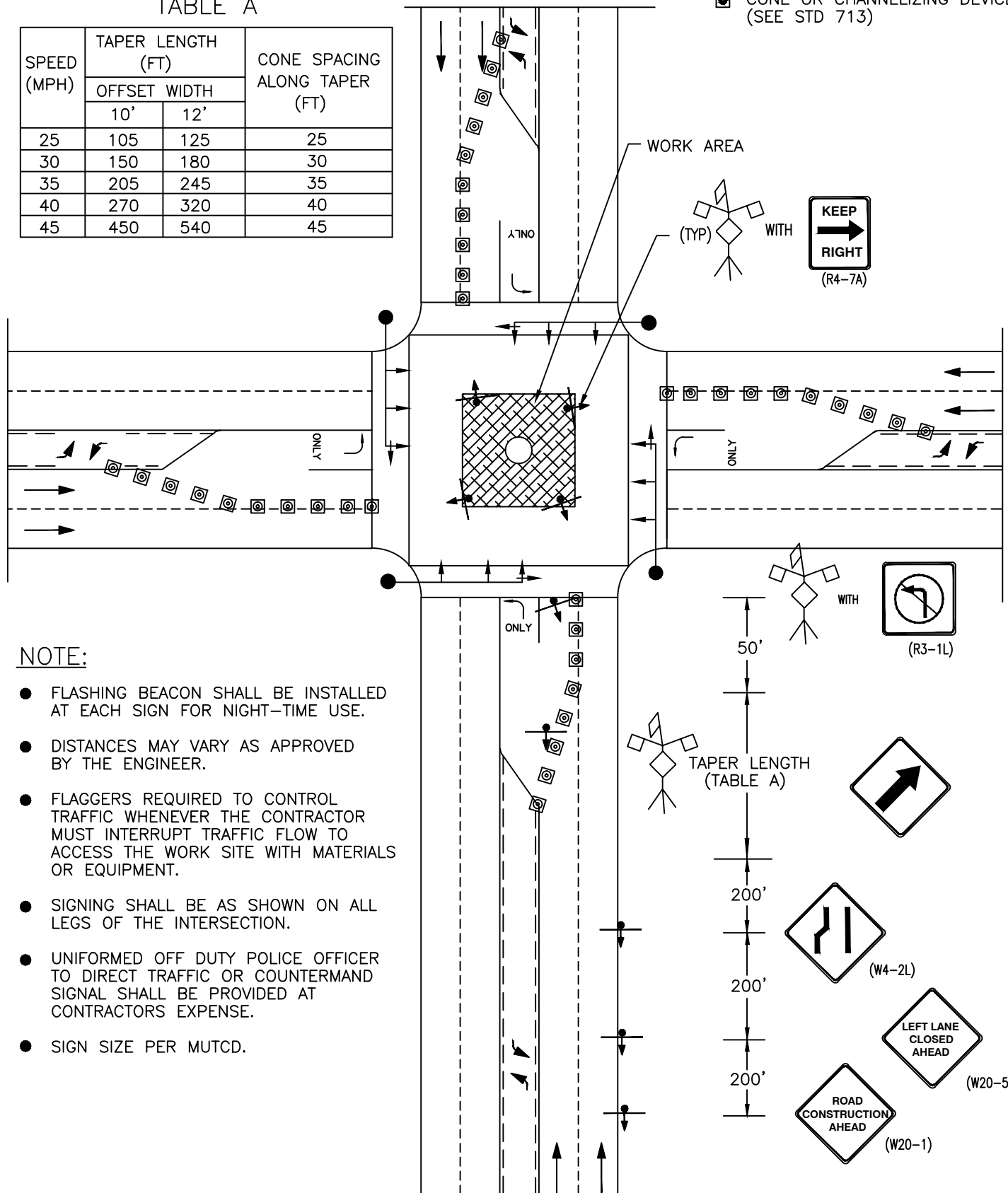
Revision Date
 Nov, 2013

LEGEND:

☐ CONE OR CHANNELIZING DEVICE (SEE STD 713)

TABLE A

SPEED (MPH)	TAPER LENGTH (FT)		CONE SPACING ALONG TAPER (FT)
	OFFSET WIDTH		
	10'	12'	
25	105	125	25
30	150	180	30
35	205	245	35
40	270	320	40
45	450	540	45



NOTE:

- FLASHING BEACON SHALL BE INSTALLED AT EACH SIGN FOR NIGHT-TIME USE.
- DISTANCES MAY VARY AS APPROVED BY THE ENGINEER.
- FLAGGERS REQUIRED TO CONTROL TRAFFIC WHENEVER THE CONTRACTOR MUST INTERRUPT TRAFFIC FLOW TO ACCESS THE WORK SITE WITH MATERIALS OR EQUIPMENT.
- SIGNING SHALL BE AS SHOWN ON ALL LEGS OF THE INTERSECTION.
- UNIFORMED OFF DUTY POLICE OFFICER TO DIRECT TRAFFIC OR COUNTERMAND SIGNAL SHALL BE PROVIDED AT CONTRACTORS EXPENSE.
- SIGN SIZE PER MUTCD.



City of Bothell

City of Bothell
PUBLIC WORKS DEPARTMENT

Approved By:

[Signature]
City Engineer

TRAFFIC CONTROL
PLAN - CENTER OF
INTERSECTION WORK

Standard
Detail

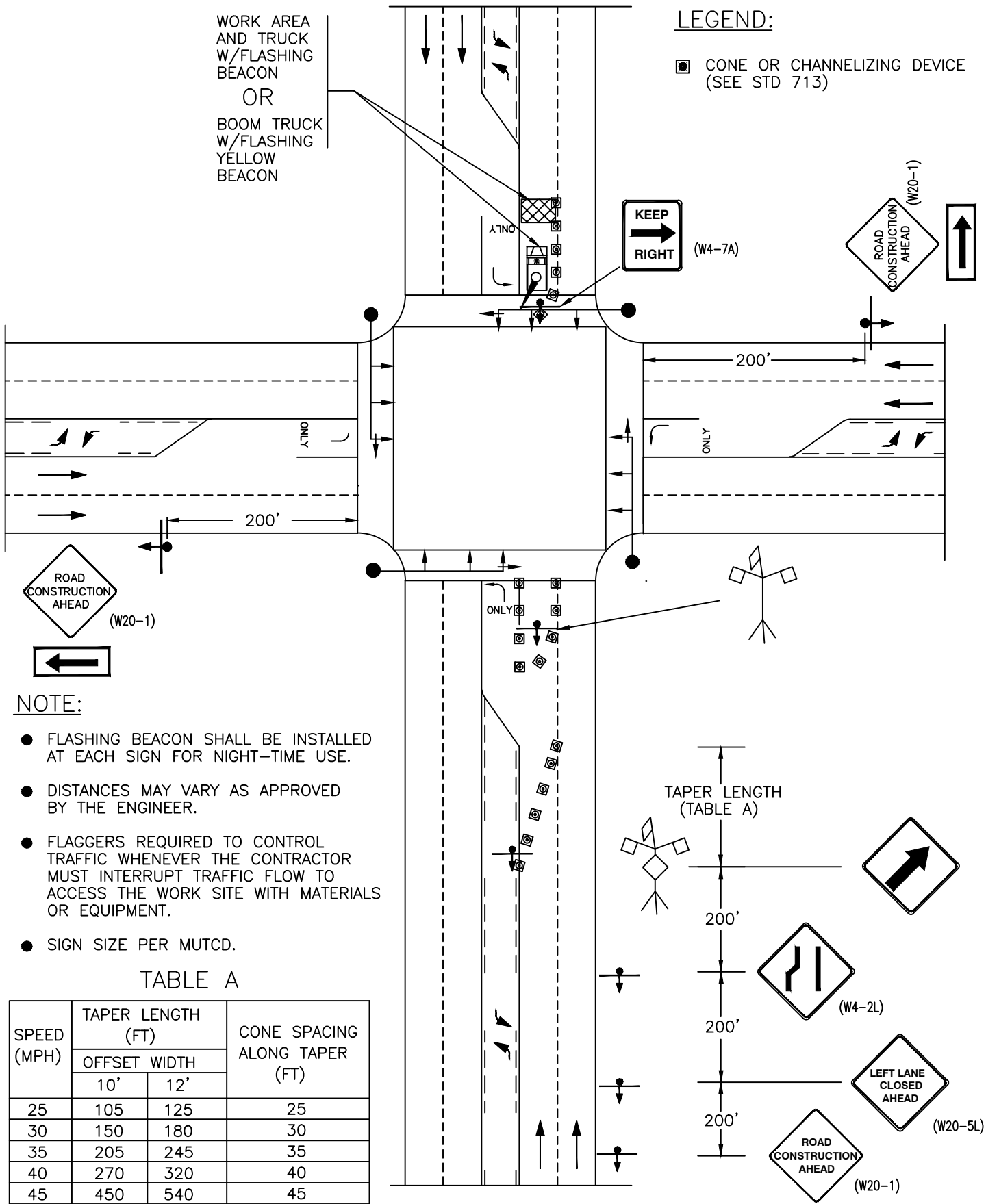
706

Revision Date
Nov, 2013

WORK AREA AND TRUCK W/FLASHING BEACON
OR
BOOM TRUCK W/FLASHING YELLOW BEACON

LEGEND:

■ CONE OR CHANNELIZING DEVICE (SEE STD 713)



NOTE:

- FLASHING BEACON SHALL BE INSTALLED AT EACH SIGN FOR NIGHT-TIME USE.
- DISTANCES MAY VARY AS APPROVED BY THE ENGINEER.
- FLAGGERS REQUIRED TO CONTROL TRAFFIC WHENEVER THE CONTRACTOR MUST INTERRUPT TRAFFIC FLOW TO ACCESS THE WORK SITE WITH MATERIALS OR EQUIPMENT.
- SIGN SIZE PER MUTCD.

TABLE A

SPEED (MPH)	TAPER LENGTH (FT)		CONE SPACING ALONG TAPER (FT)
	OFFSET WIDTH		
	10'	12'	
25	105	125	25
30	150	180	30
35	205	245	35
40	270	320	40
45	450	540	45



City of Bothell
PUBLIC WORKS DEPARTMENT

Approved By:
[Signature]
City Engineer

**TRAFFIC CONTROL
PLAN - 5 LANE
ROADWAY
LEFT LANE CLOSED**

Standard Detail

707

Revision Date
Nov, 2013

NOTE:

- FLASHING BEACON SHALL BE INSTALLED AT EACH SIGN FOR NIGHT-TIME USE.
- DISTANCES MAY VARY AS APPROVED BY THE ENGINEER.
- FLAGGERS REQUIRED TO CONTROL TRAFFIC WHENEVER THE CONTRACTOR MUST INTERRUPT TRAFFIC FLOW TO ACCESS THE WORK SITE WITH MATERIALS OR EQUIPMENT.
- SIGN SIZE PER MUTCD.

LEGEND:

- CONE OR CHANNELIZING DEVICE (SEE STD 713)

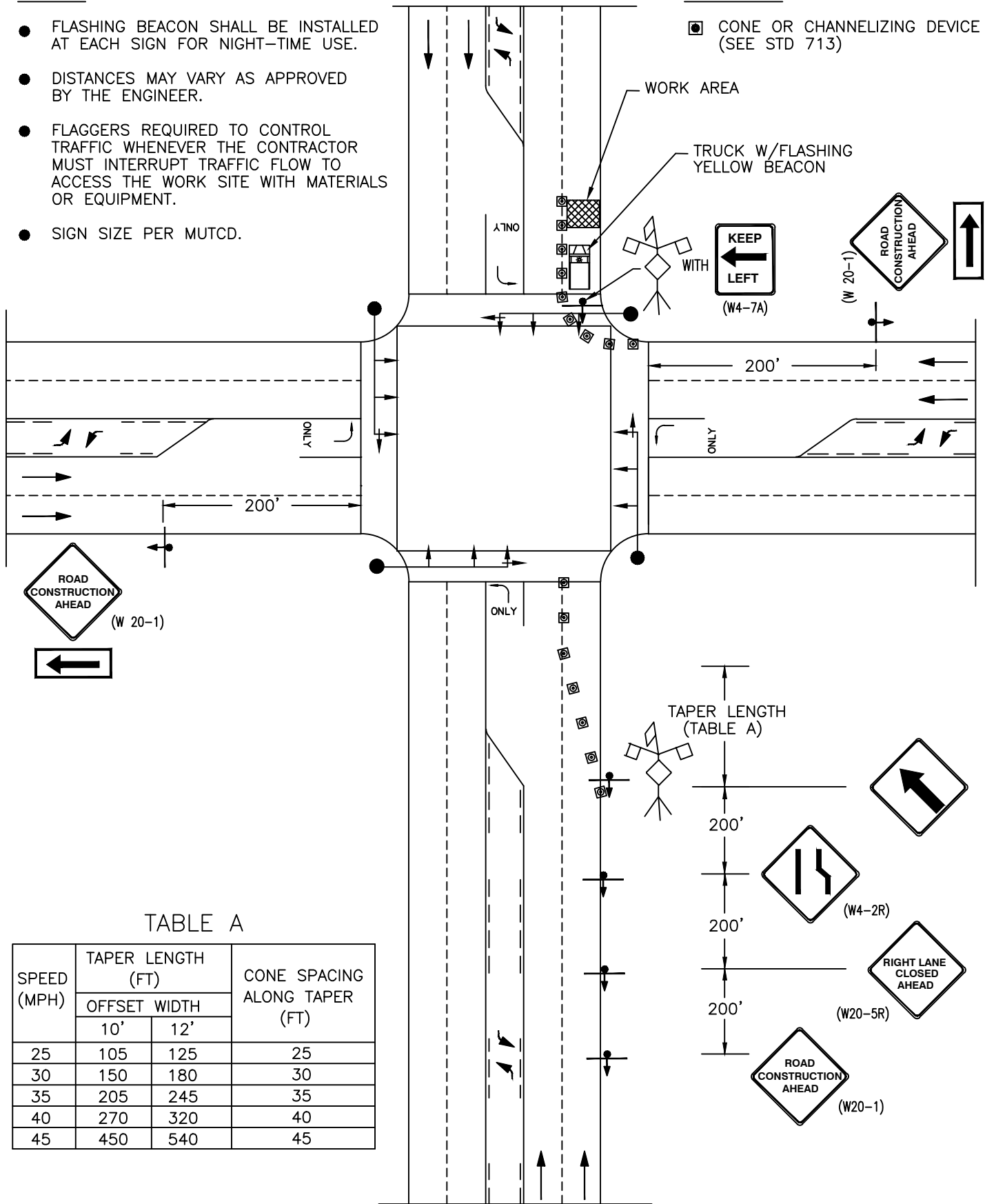


TABLE A

SPEED (MPH)	TAPER LENGTH (FT)		CONE SPACING ALONG TAPER (FT)
	OFFSET WIDTH		
	10'	12'	
25	105	125	25
30	150	180	30
35	205	245	35
40	270	320	40
45	450	540	45



City of Bothell
PUBLIC WORKS DEPARTMENT

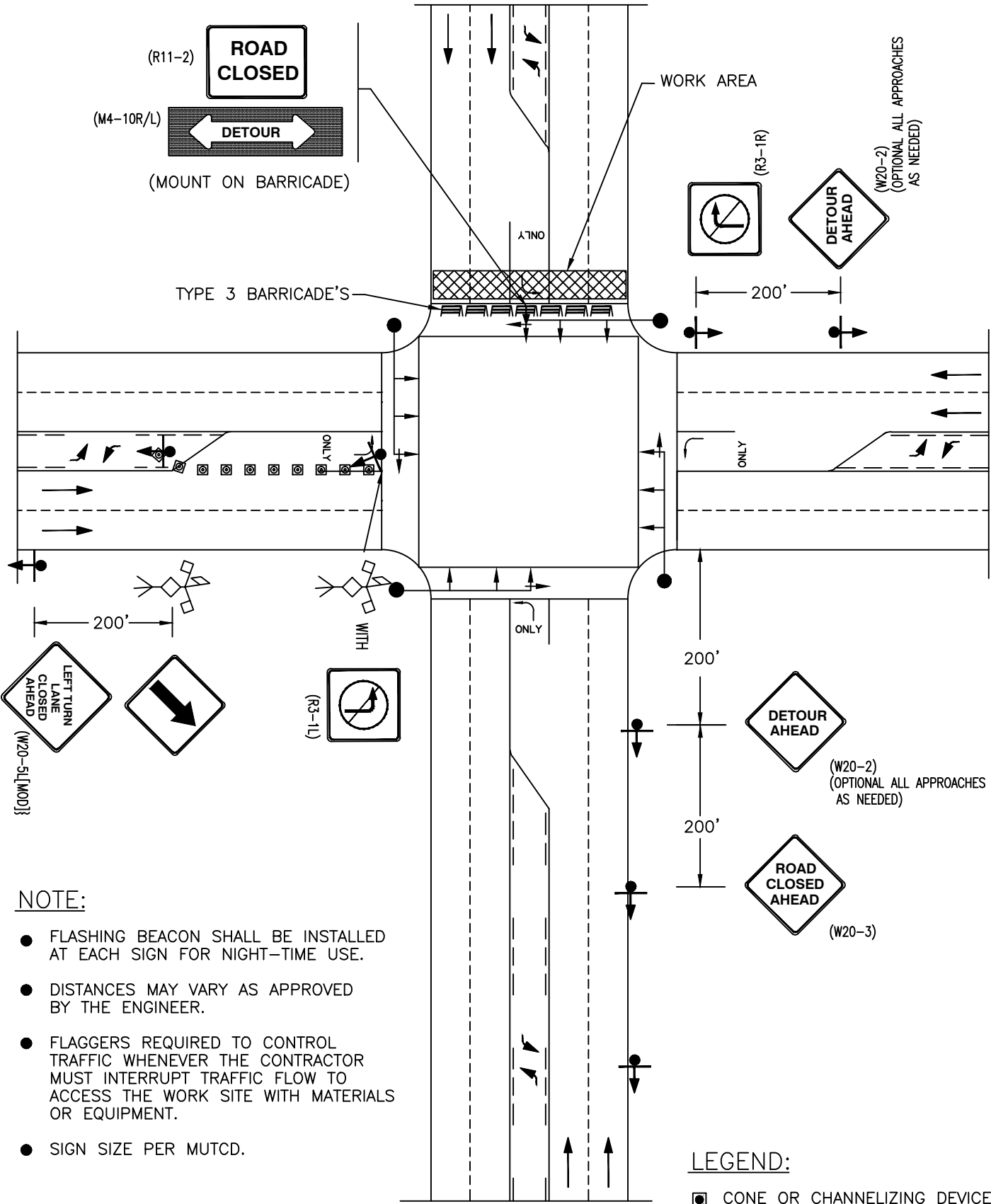
Approved By:
[Signature]
 City Engineer

**TRAFFIC CONTROL
 PLAN - 5 LANE
 AT INTERSECTION
 RIGHT LANE CLOSED**

Standard
 Detail

708

Revision Date
 Nov, 2013



NOTE:

- FLASHING BEACON SHALL BE INSTALLED AT EACH SIGN FOR NIGHT-TIME USE.
- DISTANCES MAY VARY AS APPROVED BY THE ENGINEER.
- FLAGGERS REQUIRED TO CONTROL TRAFFIC WHENEVER THE CONTRACTOR MUST INTERRUPT TRAFFIC FLOW TO ACCESS THE WORK SITE WITH MATERIALS OR EQUIPMENT.
- SIGN SIZE PER MUTCD.

LEGEND:

- CONE OR CHANNELIZING DEVICE (SEE STD 713)



City of Bothell

City of Bothell
PUBLIC WORKS DEPARTMENT

Approved By:

[Signature]
 City Engineer

**TRAFFIC CONTROL
 PLAN
 FULL STREET CLOSURE**

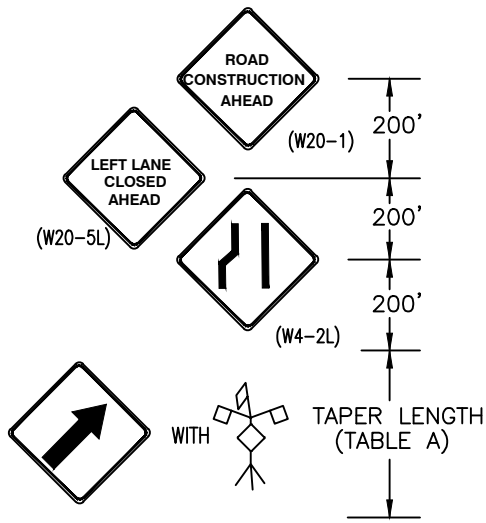
Standard
 Detail

709

Revision Date
 Nov, 2013

LEGEND:

■ CONE OR CHANNELIZING DEVICE (SEE STD 713)

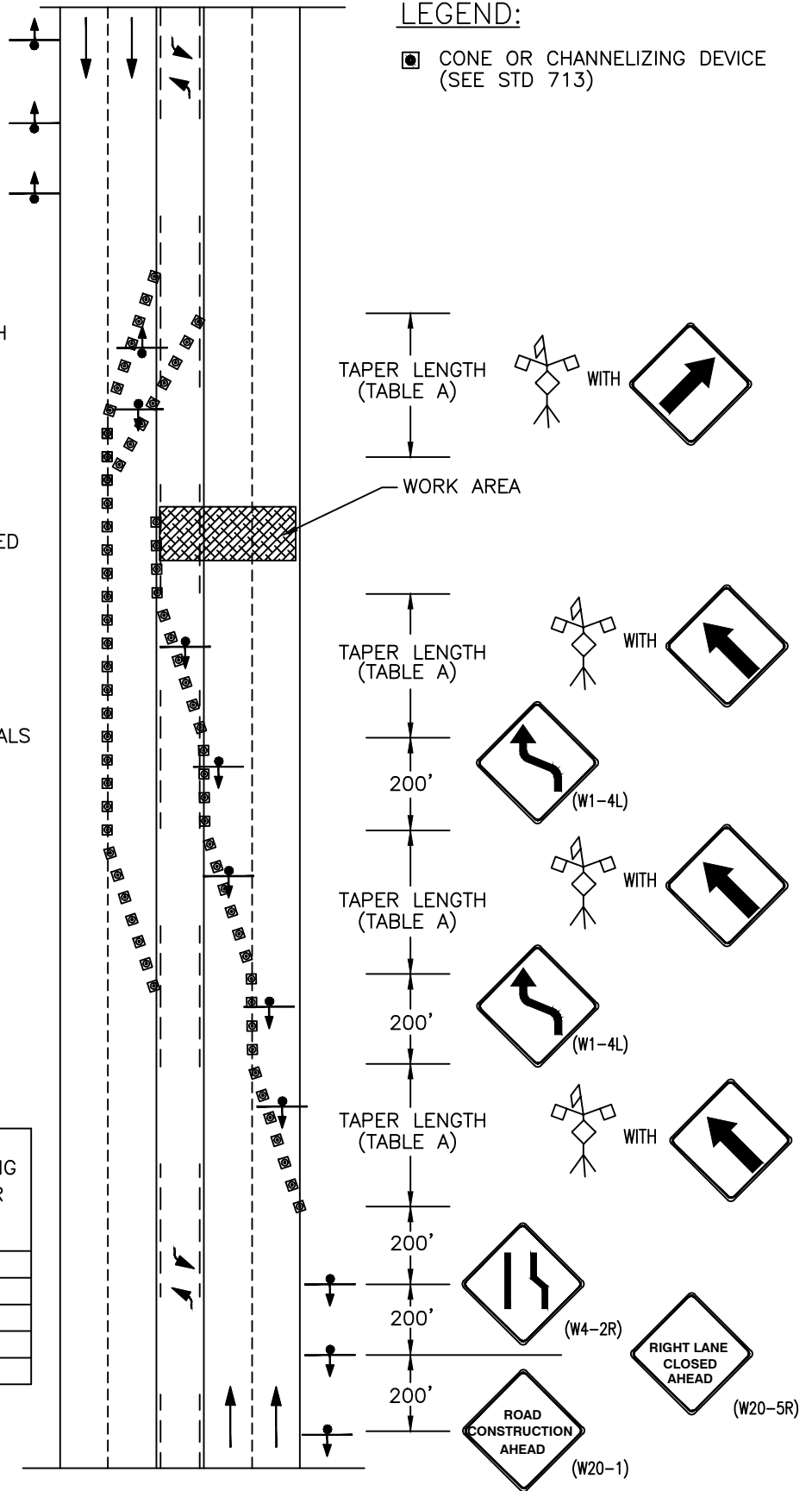


NOTE:

- FLASHING BEACON SHALL BE INSTALLED AT EACH SIGN FOR NIGHT-TIME USE.
- DISTANCES MAY VARY AS APPROVED BY THE ENGINEER.
- FLAGGERS REQUIRED TO CONTROL TRAFFIC WHENEVER THE CONTRACTOR MUST INTERRUPT TRAFFIC FLOW TO ACCESS THE WORK SITE WITH MATERIALS OR EQUIPMENT.
- SIGN SIZE PER MUTCD.

TABLE A

SPEED (MPH)	TAPER LENGTH (FT)		CONE SPACING ALONG TAPER (FT)
	OFFSET WIDTH		
	10'	12'	
25	105	125	25
30	150	180	30
35	205	245	35
40	270	320	40
45	450	540	45



City of Bothell

City of Bothell
PUBLIC WORKS DEPARTMENT

Approved By:

[Signature]
City Engineer

TRAFFIC CONTROL
PLAN - 5 LANE -
MULTILANE CLOSURE

Standard
Detail

710

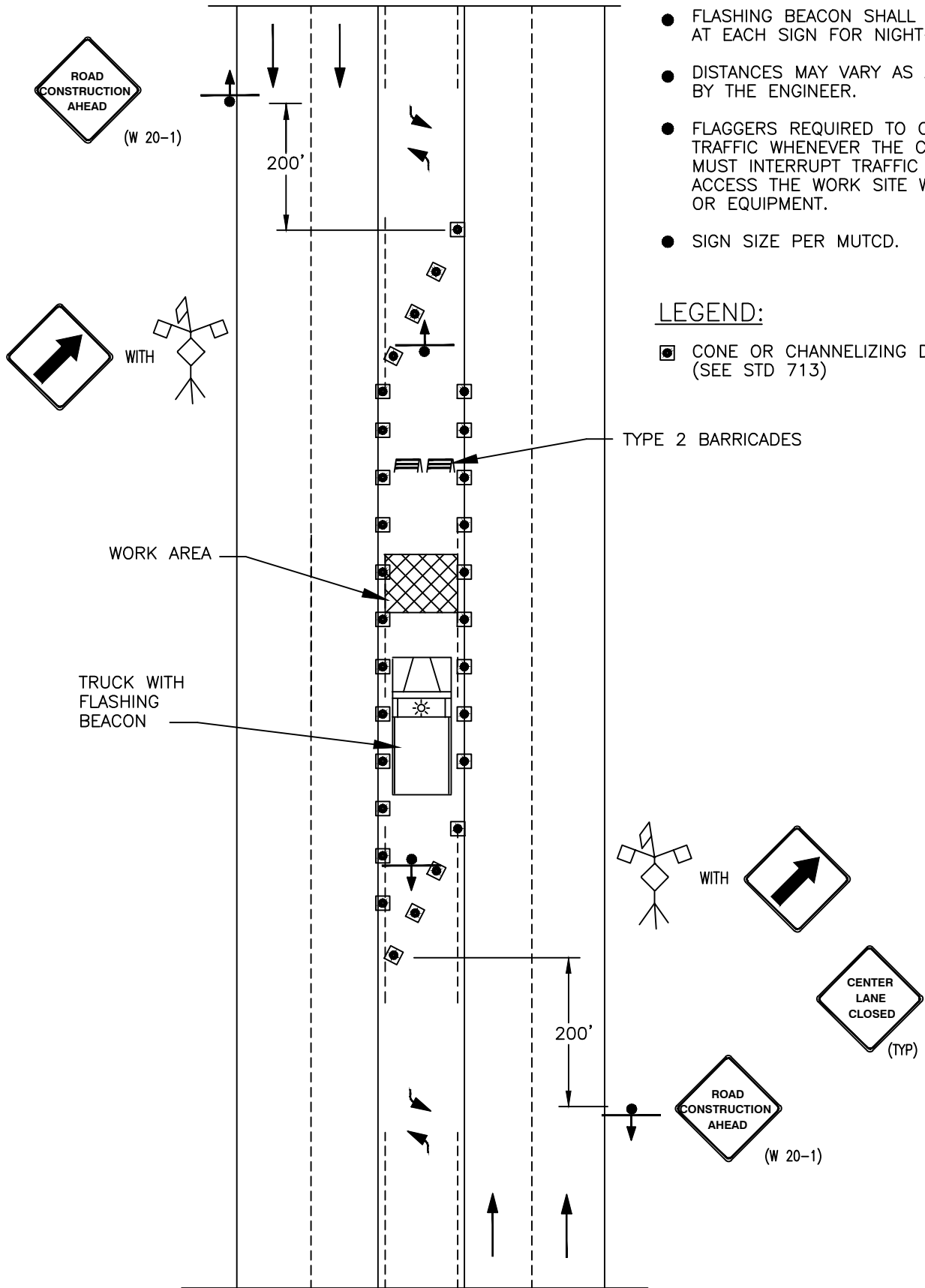
Revision Date
Nov, 2013

NOTE:

- FLASHING BEACON SHALL BE INSTALLED AT EACH SIGN FOR NIGHT-TIME USE.
- DISTANCES MAY VARY AS APPROVED BY THE ENGINEER.
- FLAGGERS REQUIRED TO CONTROL TRAFFIC WHENEVER THE CONTRACTOR MUST INTERRUPT TRAFFIC FLOW TO ACCESS THE WORK SITE WITH MATERIALS OR EQUIPMENT.
- SIGN SIZE PER MUTCD.

LEGEND:

- CONE OR CHANNELIZING DEVICE (SEE STD 713)



City of Bothell
PUBLIC WORKS DEPARTMENT

Approved By:
[Signature]
 City Engineer

**TRAFFIC CONTROL
 PLAN - TWO WAY LEFT
 TURN LANE CLOSURE**

Standard
 Detail

711

Revision Date
 Nov, 2013

NOTE:

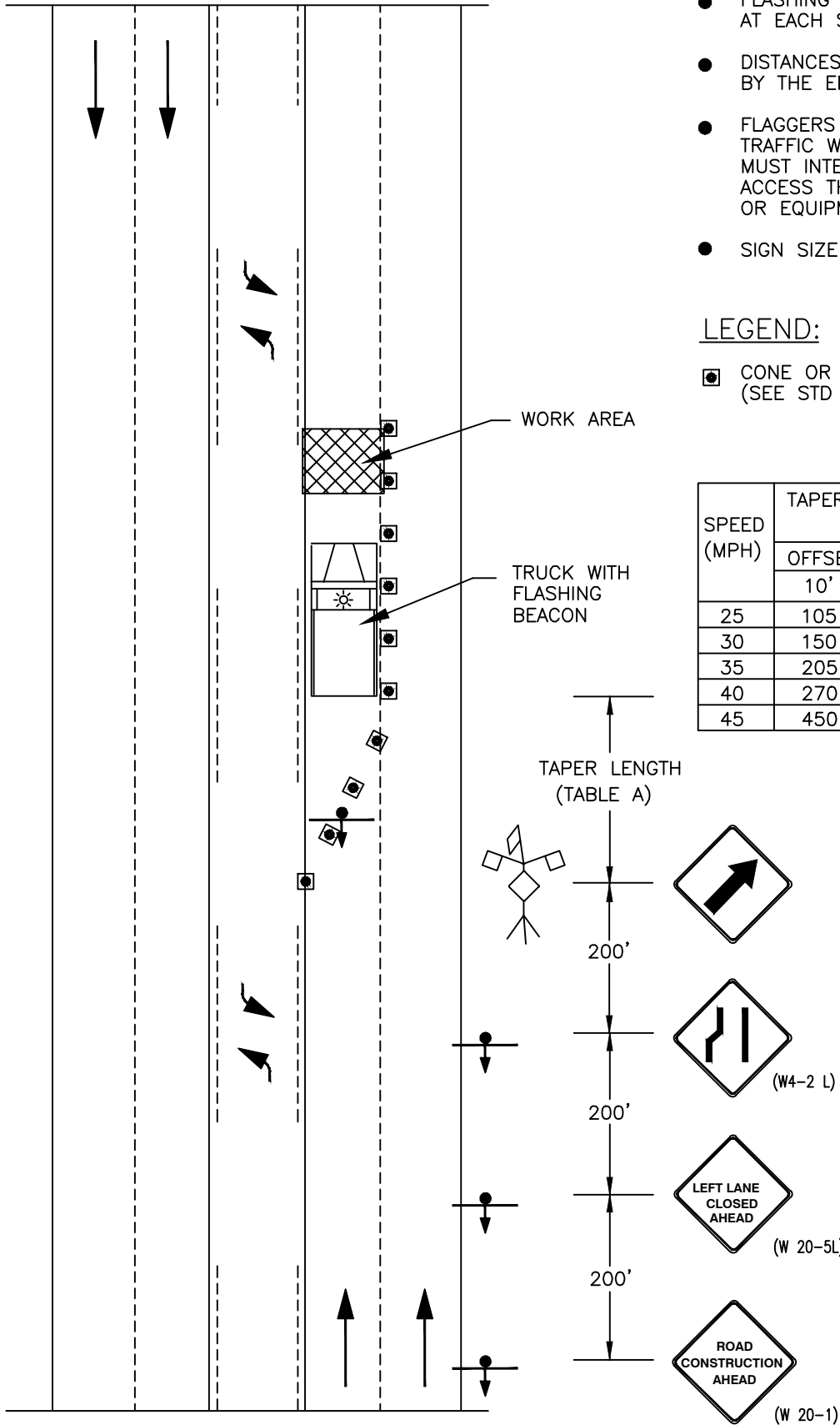
- FLASHING BEACON SHALL BE INSTALLED AT EACH SIGN FOR NIGHT-TIME USE.
- DISTANCES MAY VARY AS APPROVED BY THE ENGINEER.
- FLAGGERS REQUIRED TO CONTROL TRAFFIC WHENEVER THE CONTRACTOR MUST INTERRUPT TRAFFIC FLOW TO ACCESS THE WORK SITE WITH MATERIALS OR EQUIPMENT.
- SIGN SIZE PER MUTCD.

LEGEND:

- ◻ CONE OR CHANNELIZING DEVICE (SEE STD 713)

TABLE A

SPEED (MPH)	TAPER LENGTH (FT)		CONE SPACING ALONG TAPER (FT)
	OFFSET WIDTH		
	10'	12'	
25	105	125	25
30	150	180	30
35	205	245	35
40	270	320	40
45	450	540	45



City of Bothell

City of Bothell
PUBLIC WORKS DEPARTMENT

Approved By:

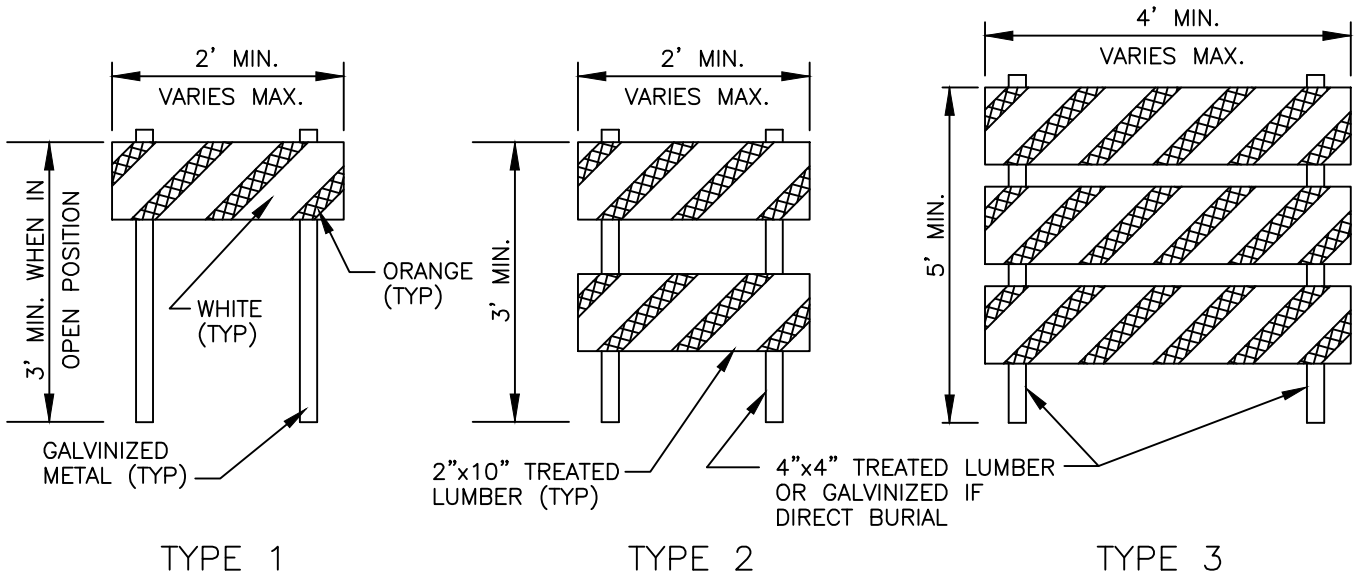
 City Engineer

**TRAFFIC CONTROL
 PLAN - 5 LANE -
 LEFT LANE CLOSURE**

Standard
 Detail

712

Revision Date
 Nov, 2013

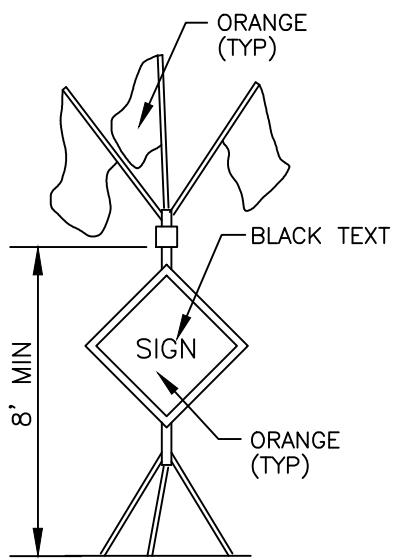


TYPE 1

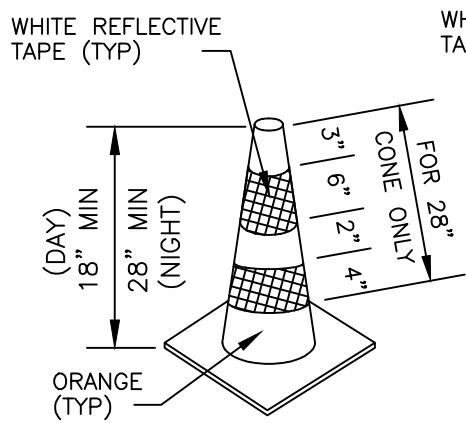
TYPE 2

TYPE 3

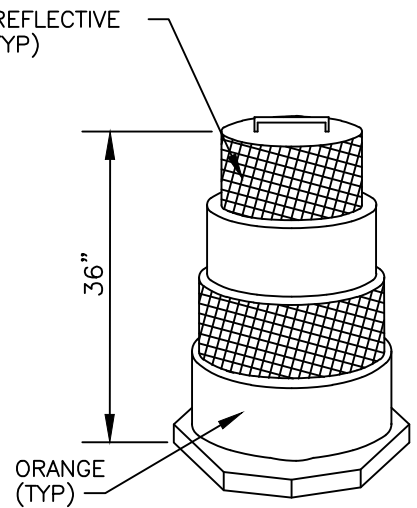
BARRICADE



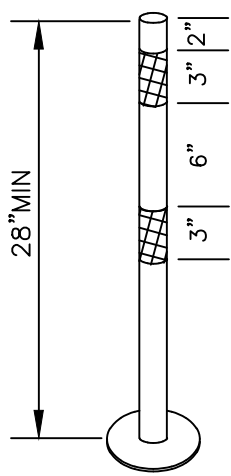
HIGH RISE WARNING



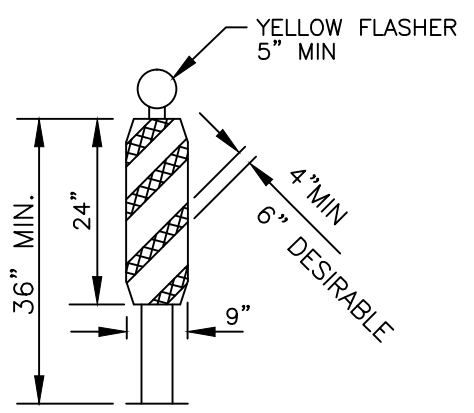
CONE



CHANNELIZING DRUM



GUIDE POST



VERTICAL PANEL



City of Bothell

City of Bothell
PUBLIC WORKS DEPARTMENT

Approved By:
[Signature]
City Engineer

TRAFFIC CONTROL DEVICES

Standard Detail

713

Revision Date
Nov, 2013