

Bothell

BRIDGE

ENJOY the SEASON

*Fun Things to Do
Winter Safety
Green Holiday Tips*

*Remembering
Bothell's History*

BECKSTROM CABIN

HEART MONTH

Dance, Yoga & More!



City of Bothell

News & Recreation Guide

WINTER 2012

COUNCIL CORNER

**Mayor
Mark Lamb**
425.482.3157
mark.lamb@
ci.bothell.wa.us



Tom Agnew
425.444.9494
tom.agnew@
ci.bothell.wa.us



Joshua Freed
206.714.1721
joshua.freed@
ci.bothell.wa.us



Tris Samberg
206.419.9308
tris.samberg@
ci.bothell.wa.us



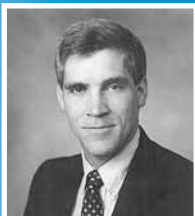
Del Spivey
206.355.2177
del.spivey@
ci.bothell.wa.us



Bill Evans
425.486.3256
bill.evans@
ci.bothell.wa.us



Patrick Ewing
425.483.5633
patrick.ewing@
ci.bothell.wa.us



Celebrate the Season in Bothell

By Deputy Mayor Joshua Freed



The chill in the air and short days signal that winter is on our doorstep and, with winter, the holidays.

Whatever your plans, *I hope you will take time to enjoy the holidays right here in Bothell.* Whether you are buying gifts or celebrating with friends and family over a good meal, you don't need to go far from home to experience the best of this season.

If you are shopping for gifts, Bothell abounds with great shops offering one-of-a-kind items for everyone on your list. Country Village is home to over 40 shops offering art, home décor, imports, antiques, clothes, crafts and much more. This popular destination is always decked for the holidays. Bothell's historic Main Street will also be decorated for the season and offers clothing, art, furniture, antiques and other gifts.

Consider giving the gift of experiences in Bothell. Many of our local restaurants, spas, and health and fitness studios offer gift certificates. You can even purchase gift certificates for recreation programs through Bothell Parks and Recreation. Take a look at pages 4 through 12 of this edition of the Bothell BRIDGE. There are probably experiences and classes that someone you know would love.

In addition to taking care of all of your holiday shopping in Bothell, it's a great city for holiday eating. Whether you want to splurge on a fancy meal, or just want to enjoy delicious pub food and a beer, amazing dining choices can be found throughout Bothell. I might see you at one of them!

Shopping and eating near home is convenient, and it's also a great way to support our local businesses and keep Bothell's economy thriving. Thanks for supporting our community.

Happy Holidays!



WINTER 2012



RECREATION

- 4 Kidz Love Soccer / Cartooniversity
- 5 Dance / Drama / Mad Science Camp
- 6 Boating / Juggling
- 6 Jr High Night / Softball / Swing Dance
- 7 Food from Outdoors / Zumba®
- 8 Belly Dancing / Tai Chi / Beg. Yoga
- 9 Int. Yoga / Stroller Strides / CPR-First Aid
- 10 Ed2Go / Park News
- 11 Trips & Tours
- 12 Parks & Community Listings
- 13 Registration Information
- 14 Thank You Event Sponsors!



GOVERNMENT NEWS

- 15 City Manager Message
- 16 Wayne Curve / 240th St SE
- 17 Crossroads Update
- 18 What To Do With Grease
- 19 City Council Highlights
- 20 Winter Safety

NEWS

- 21 911 Phones / Emergency Info
- 21 February is Heart Month
- 22 Christmas Tree Options
- 22 Pet Licensing
- 23 Beckstrom Cabin
- 24 Winter Event Listings



Editor: Joy Johnston, City of Bothell Public Information Officer
Email - joyjohnston@ci.bothell.wa.us
Phone - 425.425.486.3256 x4385

On the cover: The 1916 Kaysner Estate in Bothell is home to Preservation Kitchen which serves lunch, dinner and weekend brunch.

For more information, call 425.408.1306 or visit www.preservationkitchen.com

KIDZ LOVE SOCCER *Ages 2 - 10*

Kids 2 - 10 years of age learn the world's most popular sport from professional coaches trained in the Kidz Love Soccer method; a session experience includes age appropriate activities: skill demonstrations, fun games, and instructional scrimmages conducted in a non-competitive, recreational format.

Kidz Love Soccer: **"Where the score is always fun-to-fun!"**

Log on to www.kidzlovesoccer.com for more information.

Kidz Love Soccer Rainout Hotline: 1.888.372.5803

Registrations must be received by Wednesday, Mar. 14.

Mommy/Daddy & Me Soccer

Ages 2 - 3.5

Introduce yourself and your toddler to the "World's Most Popular Game!" As you and your child participate in our fun age-appropriate activities, your child will be developing their large motor skills and socialization skills. A variety of activities designed around the game of soccer will be played each week. The fun happens on the field, and in Mommy/Daddy & Me Soccer, you won't have to watch from the sidelines!

#8921 Fri 3/16 - 4/20
3:3-3:30pm \$55R/\$66NR Loc: Stipek Park

Tot-Soccer

Ages 3.5 - 4

Encourages large motor skill development through fun soccer games and introduces small children to the group setting. Little tykes will enjoy running and kicking just like the big kids! *Shin guards are required after the first class.*

#8922 Fri 3/16 - 4/20
3:40-4:10pm \$55R/\$66NR Loc: Stipek Park

Pre-Soccer

Ages 4 - 5

Teaches the basic techniques of the game and builds self-esteem through participation and fun soccer activities. Children learn to follow instructions in a nurturing, age appropriate environment. *Shin guards are required after the first class.*

#8923 Fri 3/16 - 4/20
4:10-4:45pm \$55R/\$66NR Loc: Stipek Park

Soccer I

Ages 5 - 6

Players will learn dribbling, passing, receiving, shooting, age-specific defense, etc. Fun skill games are played at every session, and every participant will have a ball at his or her feet. Small-sided soccer matches will be introduced gradually. *Shin guards are required after the first class.*

#8924 Fri 3/16 - 4/20
4:45-5:30pm \$55R/\$66NR Loc: Stipek Park



Skillz and Scrimmages

Ages 7 - 10

Kids 7 - 10 years of age will enjoy advanced skill building: dribbling, passing and shooting in a team play format. Each class we will play games to build individual skills and small-sided scrimmages that emphasize application of finer technical points. This is the perfect bridge from our Soccer I classes for those who are aspiring to the next level. All levels of skill are welcome to learn and enjoy the world's most popular sport! Each participant will receive a soccer jersey. *Shin guards are required at the first class.*

#8925 Fri 3/16 - 4/20
5:30-6:15pm \$63R/\$76NR Loc: Stipek Park

JEFF JOHNSON'S CARTOONIVERSITY

Ages 9 - 14

Come be a part of Cartooniversity and have a blast learning the art of cartooning. This class provides a unique opportunity for youth of any skill level to learn all aspects of cartoon drawing from local editorial cartoonist, Jeff Johnson. The class emphasizes developing each youth's own style in a positive, encouraging environment. Techniques covered in this class will include character development, expressions, action, movement, layout, background, perspective and much more! Experienced and beginning artists are welcome.

** All students need to bring their sense of humor and a sack lunch. Instructor will provide all supplies needed for the class. Registrations must be received by Wednesday, Jan. 4.*

#8203 Sat 1/7
10am-2pm \$48R/\$57NR Loc: Lytle House



DANCE & CREATIVE MOVEMENT *Ages 5 - 7*



A great class for beginning dancers! Both boys and girls are encouraged to participate in this class. Your child will discover & develop a love for dance as we explore basic creative movement fundamentals in a fun and positive environment. Children will learn to express themselves through dance routines using multiple styles of dance including Jazz, Ballet, Modern Dance, and Hip-Hop. Come dance with your child, watch, or drop off. Parents and Grandparents be sure to come to “watch day” on the last day of class as dancers demonstrate learned choreography. Please wear comfortable clothing to move in, have bare feet, and put long hair up in a pony-tail. Class instructor Heidi received a degree in Dance from the University of Washington. **Registrations must be received by Thursday, Jan. 19.**

#9141 Mon 1/23 - 3/5* 5:45-6:35pm
 \$55R/\$69NR Loc: Lytle House
 *No class on 2/20

MAD SCIENCE SPRING BREAK CAMP

Mad Science is the world's leading science enrichment provider. We deliver unique, hands-on science experiences for children that are as entertaining as they are educational. Mad Science is proud to introduce millions of children to a world of discovery while sparking their imagination. Mad Science encourages scientific literacy in children in an age when science is as vital as reading, writing and arithmetic.



Science Sleuths *Ages 6 - 12*

Decode the world around you as a Mad Science Sleuth! Send secret messages to your friends. Get a taste for space with an astronaut snack! Explore the universe with your own orbiter and use teamwork to unearth pollution solutions. Figure out the trick of the tight ropes and sniff out scents on our Mad Science trail. Uncover the answers to these mysteries and more as you become a genuine Mad Science Sleuth! **Registrations must be received by Tuesday, April 10**

#8933 M-F 4/16 - 4/20 1-4pm
 \$146R/\$175NR Loc: Lytle House



ADVENTURE CHILDREN'S THEATRE DRAMA CLUB *Grades 6 - 8*

Are you a ham? Do you love to entertain your friends? Are you shy but dramatic at home? No matter who you are if you have the desire you can learn to act! Come join the Adventure Children's Theatre Drama Club and develop your actor's tools – the body, the mind and the voice! This class is a wonderful setting to build confidence, learn teamwork, be creative, make new friends and have fun! Everyone will have a part in the ensemble show! Each class, students will do theatre warm-ups, have an acting lesson, be directed in the blocking and staging of the script, work on character development and play theatre games!

Family and friends are invited to watch their performance on the last day! Encore! Encore! Instructors Chris Whalen and Sarah Seigneuret have over 20 years experience in children's theatre and are the artistic directors of Adventure Children's Theatre. This class meets 10 times for a total of 15 hours. **Registrations must be received by Thursday, January 5.**

#9151 Mon 1/9 - 3/26* 7-8:30pm
 \$200R/\$240NR Loc: Lytle House
 *No class on 1/30 & 2/27

About Boating Safely

All ages - under 15 with an adult

Interested in an exciting, in-depth boating safety course? If so, this beginner boating class is perfect for you! This class will give you the knowledge needed to obtain a boat license or safety certification in Washington State, as well as many other states.

Registrations must be received by Wednesday, Feb. 8 for February class and Wednesday, Mar. 21 for March class

Topics covered include: An introduction to Boating, Boating Law, Boat Safety Equipment, Safe Boating, Navigation, Boating Problems, Trailering, Storing and Protecting Your Boat, Hunting and Fishing, Water-skiing and River Boating. Many boat insurers will offer discounts on boating insurance to boaters who successfully complete the "About Boating Safely" course.



#8931 Sat 2/11 8:30am-5:30pm
\$27R/\$32NR Family 2+ people \$36R/\$43NR
Loc: Lytle House

#8932 Sat 3/24 8:30am-5:30pm
\$27R/\$32NR Family 2+ people \$36R/\$43NR
Loc: Lytle House

Juggle 4 Fun

Ages 10 & up

All levels are welcome – no experience is necessary. Beginners will learn the basic three ball pattern while more experienced jugglers can learn harder tricks like "The Factory." In addition to balls, we use rings, clubs and other juggling props. There is ample classroom opportunity to work on team juggling and to get help with juggling more than three objects. Juggling is great for improving hand-eye coordination and is fun for the whole family. New students need to buy juggling balls from the instructor on the first night of class. Juggling balls are available for \$8 and up. January 11th is "Try Juggling for Free" night. Bring yourself or the entire family to class for free and give juggling a try. **Registrations must be received by Tuesday, Jan. 3.**



#8940 Wed 1/4 - 3/21*
7-8:30pm \$18R/\$22NR
***No class Feb. 8 & 22**
Loc: Frank Love Elementary

TEEN & ADULT

Jr. High Gym Night

All Junior High Students

Just for Jr. High students! Drop in to shoot some hoops or just hang with friends and have a slice of pizza. This is an award-winning collaborative program between the City of Bothell Parks & Recreation, City of Bothell Fire and E.M.S. and Uncle Peteza's Pizzeria.

Mondays Ongoing
5-6:30pm (Not offered on non-school days)
FREE Loc: Frank Love Elementary

Adult Softball Leagues

The City of Bothell offers Coed, Women's and Men's softball leagues. To find out more about our leagues visit www.leaguelineup.com/bothellsoftball after January 18, 2012.



Beginning Swing Dance

Ages 15 & up

Dust off those saddle shoes and penny loafers and join us on the beautiful, hardwood floors of the Lytle House, where you will learn to swing dance to the big band sounds of the forties and fifties. Dance instructors, Pam and Andy, have been teaching swing dance for over thirty years and look forward to taking you from the beginning, basic steps to the more advanced moves. No special attire is needed for this class, though hard soled shoes would be preferable. **Registrations must be received by Wednesday, Jan. 18**

#9144 Fri
1/20 - 2/24
7-8pm
Individual \$50R/\$60NR
Couple \$75R/\$90NR
Loc: Lytle House





FOOD FROM THE WILD OUTDOORS

Sign up for one, two or all three of these classes and get ready to learn about three fun Northwest food topics. Roger Urbaniak is an outdoor writer and has spent many years in Washington fishing and gathering wild edible food ranging from shellfish to wild asparagus. In this series of classes, Roger will share his secrets of where to go and what to do when you get there.

Fishing Techniques for Local Waters *Ages 15 & up*

Come learn proven techniques for catching trout, bass and perch from local lakes. Class covers lure selection, presentation, best fishing locations, tying your own knots and basic care for your catch. Methods discussed will cover dock and boat fishing. **Registrations must be received by Monday, Feb. 20**

#9029 Wed 2/22 7-8:30 p.m. \$15R/\$18NR Loc: Police Dept. Comm. Room

Gathering and Identifying Wild Foods *Ages 18 & up*

This class will discuss such tasty foods as wild asparagus, morel and chanterelle mushrooms, wild blueberries, a variety of fruits and unusual foods such as cattails, nettles, liquorish fern and chestnuts. Students will not only learn where and when to find these foods but also how to properly identify them and even a few recipes for cooking some of them. **Registrations must be received by Monday, Feb. 27**

#9030 Wed 2/29 7-8:30 p.m. \$15R/\$18NR Loc: Police Dept. Comm. Room

Shellfish Gathering Basics *Ages 18 & up*

Learn how and when to safely harvest clams, oysters, and Dungeness crab as well as locations for public beaches where you may find them. Instructor Roger Urbaniak will walk you through the basics including proper care of your harvest and provide you handy summary information reminding you of what to do when you are ready to go. You will be shown the proper use of tide tables, oyster knives, clam rakes, crab pots, and even get to take home a few favorite recipes that will help you enjoy your catch. **Registrations must be received by Monday, Mar. 5**

#9153 Wed 3/7 7-8:30 p.m. \$15R/\$18NR Loc: Police Dept. Comm. Room

ZUMBA®

Ages 18 & up

City of Bothell Recreation Services now offers two unique ZUMBA® opportunities. Start the morning right or come have some fun before your day is done with a ZUMBA® fitness class. Ditch the workout and Join the party! ZUMBA® is a Latin-inspired dance aerobics class using intervals and body weight resistance to burn fat and sculpt your body. It's the ultimate dance party spiced up with fast and slow rhythms from Latin and international music. The easy-to-follow steps require no dance experience. Bring a water bottle to each class. All classes are taught by ZUMBA® instructor Amy Larson. Sign up early as these classes are sure to fill. Wear comfortable workout clothes and shoes.



AM CLASSES

#9019 Tue & Thurs 1/3 - 1/31
9-10am \$45R/\$54NR Loc: Lytle House

#9020 Tue & Thurs 2/2 - 3/1
9-10am \$45R/\$54NR Loc: Lytle House

#9021 Tue & Thurs 3/6 - 4/3
9-10am \$45R/\$54NR Loc: Lytle House

PM CLASSES

#9022 Tue & Fri 1/3 - 1/31
5:30-6:30pm \$45R/\$54NR Loc: Lytle House

#9023 Tue & Fri 2/3 - 3/2
5:30-6:30pm \$45R/\$54NR Loc: Lytle House

#9024 Tue & Fri 3/6 - 4/3
5:30-6:30pm \$45R/\$54NR Loc: Lytle House

ALL ZUMBA FLEX PASS

Purchase a twelve visit Flex Pass and use it at any AM or PM Zumba class.

#9025 Dec - Mar \$60R/\$72NR
This pass available for purchase Dec 1

#9026 Jan - Apr \$60R/\$72NR
This pass available for purchase Jan 1

#9027 Feb - May \$60R/\$72NR
This pass available for purchase Feb 1

#9028 Mar - June \$60R/\$72NR
This pass available for purchase Mar 1

\$8 Drop-In Fee to all Zumba classes
(if space available)

Absolute Beginning SUN TAIJI (T'ai Chi)

Ages 16 & up

In this course, you will learn and apply the movements of Sun Taiji, developed by Sun Lu Tang, a warrior-scholar, in the early 20th century. It is a combination of three martial arts including Qi Gong. This style employs principles of movement and energy work - known to help minor to acute arthritis. As a martial art, the movements are a blend of beauty and power — easy to learn, but with great depth. Coach Kevin Fitch, originally from the New York, has more than 35 years of martial arts experience, and his students run the gamut from teenagers to senior citizens, corporate execs, to police detectives. Using principles of energy medicine together with Taiji, Coach Fitch shows you how to feel thoroughly energized and vitalized, in order to strengthen a weak body, dispel fatigue, and increase personal safety skills. What you will feel and be able to accomplish energetically after the first, class will surprise you. Participants should wear comfortable clothing and shoes. All participants will receive a DVD showing the basic movements used in class. **Registrations must be received by Friday, Jan. 6 for January class and Friday, Feb. 24 for February class.**

#9142 Tue 1/10 - 2/21*
7-8:30pm \$66R/\$79NR Loc: Lytle House
*No class on 2/14

#9143 Tue 2/28 - 4/3
7-8:30pm \$66R/\$79NR Loc: Lytle House

Belly Dance Egyptian Style: BEGINNERS Ages 15 & up

Looking for a creative way to stay in shape or a new hobby? This is the class to take if you've never taken a belly dance class or if you're new to Mellilah's style of teaching! This fun, low-impact course will allow you to express yourself creatively, while increasing flexibility, core strength, coordination, confidence and poise. Learn Egyptian belly dance in a non-threatening environment from Seattle's award winning belly dancer. The first 30 minutes will include an easy to follow breakdown of basic belly dance movement and technique, followed by 30 minutes of application, drills and stretches in an all-inclusive setting, overlapping with the intermediate class. Belly dance clothing not required. Wear comfortable clothing, such as an exercise top or t-shirt and yoga pants. We welcome all ages and sizes. Belly dancers dance

barefoot but shoes are acceptable. Students should bring a yoga or floor mat to class. Contact Mellilah for more information: 206.370.2881, www.mellilah.com. **Registrations must be received by Monday, Jan. 9 for January class and Monday, Feb. 20 for February class.**

#8941 Wed 1/11-2/15
6:30-7:30pm \$66R/\$79 NR Loc: Lytle House

#8942 Wed 2/22-3/28
6:30-7:30pm \$66 R/\$79 NR Loc: Lytle House

\$15 Drop-In Fee for the classes listed above

Belly Dance Egyptian Style: MULTI-LEVEL Ages 15 & up

A multi-leveled class for all levels of dancers, including advanced. Learn Egyptian belly dance from one of Seattle's top belly dancers. Mellilah's classes are undeniably designed for mastery of the dance, thorough and systematic, and at the same time, fun and rewarding! The first 30 minutes will include warm-ups, essential drills and stretches in an all-inclusive setting, overlapping with the first class, followed by enrichment, including layering, stylization, combinations and finger cymbals. We welcome all ages and sizes. Wear comfortable clothing, such as an exercise top or t-shirt and yoga pants. Students should bring finger cymbals (zills) and a yoga/floor mat to class.

Contact Mellilah for more information: 206.370.2881, www.mellilah.com. **Registrations must be received by Monday, Jan. 9 for January class and Monday, Feb. 20 for February class.**

#8943 Wed 1/11-2/15
7-8pm \$66R/\$79NR Loc: Lytle House

#8944 Wed 2/22-3/28
7-8pm \$66R/\$79NR Loc: Lytle House

\$15 Drop-In Fee for the classes listed above



Belly Dance Choreography Class: TROUPE Ages 15 & up

Apply what you've learned and work as part of a group, learning choreographies designed by Mellilah. This class focuses on learning and polishing the individual dance pieces, stage presence, and the application of technique. Handouts are provided to assist students and video footage for practice at home is often available. Class sessions are cumulative, as troupe members build a repertoire of dance pieces throughout the year intended for performances at student showcases. Performances will be at the discretion of the teacher, and costume and/or prop purchases may be required for those wishing to perform. New members are welcome and should contact Mellilah prior to enrolling at 206.370.2881. **Prerequisite: You must be currently enrolled in one of Mellilah's belly dance classes.** This class will not focus on technique and assumes a basic level of understanding and ability to execute movement vocabulary and isolations. **Registrations must be received by Monday, Jan. 9 for January class and Monday, Feb. 20 for February class.**

#8945 Wed 1/11-2/15
8-9pm \$53R/\$64NR Loc: Lytle House

#8946 Wed 2/22-3/28
8-9pm \$53R/\$64NR Loc: Lytle House

\$8 Drop-In Fee for the classes listed above

Beginning Yoga Ages 15 & up

This class is perfect for newcomers and beginners. A regular yoga class provides tremendous benefits. Even one class a week can help you develop strength, balance, and flexibility in your body and life. Yoga can help you deal with the stress of urban living! Instructor Debby Bliss has been practicing yoga for over 15 years, and has completed the two year certified Purna Yoga College. Students need to bring the following props to class - two yoga blocks, 8 ft. yoga strap and sticky mat. **Registrations must be received by Tuesday, Jan. 3 for January class and Tuesday, Feb. 21 for February class**

#8927 Thurs 1/5 - 2/16*
7-8:30pm \$66R/\$79NR Loc: Lytle House
*No class on 1/19

#8928 Thurs 2/23 - 4/5*
7-8:30pm \$66R/\$79NR Loc: Lytle House
*No class on 3/29

\$15 Drop-In Fee for the classes listed above

Intermediate Yoga

Ages 16 & up

This class will emphasize refinement of basic poses. We will continue exploration of inversions, backbends, forward bends and twists. Students must have completed the Beginning Yoga class or have six months yoga experience. Instructor Debby Bliss has been practicing yoga for over 15 years, and has completed the two year certified Purna Yoga College. Required props are two yoga blocks, an 8 ft. yoga strap, sticky mat and two shoulder stand pads. **Registrations must be received by Tuesday, Jan. 3 for January class and Tuesday, Feb. 21 for February class**

#8929 **Thurs** **1/5 - 2/16***
5:15-6:45pm **\$66R/\$79NR** **Loc: Lytle House**
***No class on 1/19**

#8930 **Thurs** **2/23 - 4/5***
7-8:30pm **\$66R/\$79NR** **Loc: Lytle House**
***No class on 3/29**

\$15 Drop-In Fee for the classes listed above

Bothell

Stroller Strides

Open to all moms



Are you a new or seasoned mom looking to get in shape, meet other moms, and set a positive example for your little one? Look no further, Stroller Strides of Bothell has partnered with the City of Bothell Parks & Recreation to bring you Stroller Strides classes! Stroller Strides is a 60 minute, total body fitness program for moms that you can do with your baby. It includes power walking and intervals of body toning using exercise tubing, the environment, and the stroller. Taught by specially trained instructors who are also moms, Stroller Strides is designed to be a great workout for ANY level of exerciser. Your first class is FREE, come try one at anytime! Visit www.strollerstrides.net/kirkland for our class schedule including times, days, and fees. All payments are taken at class. Contact Hilary Storey with any questions at hilarystorey@strollerstrides.net

M & W Ongoing

5:30-6:30pm

Loc: Lytle House/Park at Bothell Landing

Saturday Ongoing

9-10am

Loc: Lytle House/Park at Bothell Landing



LYTLE HOUSE

Is your house too small for that family gathering? Consider renting ours!

The Lytle House is perfect for parties, showers, receptions and other fun events. Contact us at 425.486.7430 or email lytlehouse@ci.bothell.wa.us for additional information.

CPR AND FIRST AID CLASSES: INDIVIDUALS

Classes are taught by City of Bothell Fire and E.M.S. To register for a class, or for registration information, contact City of Bothell Parks & Recreation at 425.486.7430. Registration is required for all classes. For specific class questions, contact Public Educator Kirsten Clemens at 425.489.3364 or kirsten.clemens@ci.bothell.wa.us.

Basic First Aid

Do you know how to respond in an emergency? Learn the most common medical and injury emergencies, such as, treating shock, opening an airway, controlling bleeding and much more. This course is meant to meet workplace requirements and upon successful completion, you will receive an American Heart Association student manual & certification card valid for two years. **Please note: this class does not include CPR. CPR and AED classes are also available, please see course offerings below. Registrations must be received by the Monday prior to the class start date.**

#8189	Tues	12/13
5-7:30pm	\$38R/\$46NR	
#8190	Tues	1/24
5-7:30pm	\$38R/\$46NR	
#8191	Tues	2/28
5-7:30pm	\$38R/\$46NR	
#8934	Tues	3/20
5-7:30pm	\$38R/\$46NR	

Loc: Downtown Firehouse

Adult/Child CPR and AED

This course teaches participants CPR and to use the AED (Automated External Defibrillator) for adults (eight years old and above) and children (one to eight years old). Participants will also learn how to recognize and respond to life threatening medical emergencies, such as heart attack, cardiac arrest, stroke, and choking. This course is meant to meet workplace requirements and upon successful completion, you will receive an American Heart Association student manual & certification card valid for two years. **Please note: this class does not meet the requirements for Healthcare Provider CPR/AED. Registrations must be received by the Monday prior to the class start date.**

#8195	Tues	12/13
7:30-10pm	\$38R/\$46NR	
#8196	Tues	1/24
7:30-10pm	\$38R/\$46NR	
#8197	Tues	2/28
7:30-10pm	\$38R/\$46NR	
#8937	Tues	3/20
7:30-10pm	\$38R/\$46NR	

Location: Downtown Firehouse

CPR AND FIRST AID CLASSES: BUSINESSES / GROUPS

City of Bothell Fire and E.M.S. will also send an instructor for on-site training for businesses or group classes. For more information or to schedule a business or group class, please contact Public Educator Kirsten Clemens 425.489.3364 or kirsten.clemens@ci.bothell.wa.us.

INSTRUCTOR-FACILITATED ONLINE LEARNING



Our instructor-facilitated online courses are informative, fun, convenient, and highly interactive. Our instructors are famous for their ability to create warm and supportive communities of learners. It's no wonder that many long-lasting friendships have formed in our lively and intelligent discussion areas.

All courses run for six weeks (with a two-week grace period at the end). Courses are project-oriented and include lessons, quizzes, hands-on assignments, discussion areas, supplementary links, and more. You can complete any of these courses entirely from your home or office and at any time of the day or night.

How to Get Started:

1. Choose a class from the many choices listed in our Online Instruction Center www.ed2go.com/bothell. We have listed the sections, or areas of study, to the right. Each section may have many classes offered.
2. Fill out the registration form completely and mail/fax/walk it in to Bothell Parks and Recreation with payment.
3. Once you have registered with Bothell Parks & Recreation, go back to our Online Instruction Center: www.ed2go.com/bothell
4. Click the **Orientation** link and follow the instructions. During orientation, you will learn important information about your course. You will be provided an opportunity to choose the name and password you will use to access your course.
5. When your course starts, return to our Online Instruction Center and click the **Classroom** link. To begin your studies, simply log in with the name and password you selected during orientation.

Start Dates: A new section of every course in this catalog will begin on **Dec 14, Jan 18 and Feb 15.**

Requirements: All courses require Internet access, e-mail, Netscape Navigator, or Microsoft Internet Explorer. Some courses may have additional requirements. Please visit our Online Instruction Center for more information.

Class Fees: \$75R/\$90NR

Multiple classes may be offered under each of the sections. **Make sure to go to www.ed2go.com/bothell** to see a complete list and description of class offerings.



Accounting
Basic Computer Literacy
Business Administration
Career Development
Childcare & Parenting
Computer Applications
Courses for Teaching Professionals
Database Management
Digital Photography
Entertainment Industry
Family & Friends
Grantwriting / Non-profits
Graphic Design
Health Care, Nutrition & Fitness
The Internet
Languages
PC Networking/Troubleshooting
Personal Enrichment
Personal Development
Personal Finance
Sales & Marketing
Start Your Own Business
Test Prep
Web & Computer Programming
Web Graphics & Multimedia
Web Page Design
Writing & Publishing

PARK NEWS

BRACKETT'S LANDING PARK

One of Bothell's smallest parks at one half acre, Brackett's Landing provides a quiet respite when biking or walking the Sammamish River Trail. Located at 11101 NE 174th St., Brackett's Landing has benches and picnic tables that overlook the Sammamish River. This park is named for George Brackett, who ran a logging camp in the Bothell area but who never actually lived in Bothell. You can also find Brackett's Landing Park on the Edmonds waterfront where George is better known as the founder of Edmonds.

CITY OF BOTHELL NON-DISCRIMINATION POLICY

The City of Bothell complies with the State of Washington's "Fair Play in Community Sports Act" (Chapter 467, 2009 Laws, effective date July 26, 2009) that prohibits discrimination against any person in a community athletics program on the basis of sex. Any questions or comments please contact Patricia Parkhurst, Recreation Manager at 425.486.7430. A complete copy of the City's policy can be found on the City of Bothell website, www.ci.bothell.wa.us.

GETTING TO THE PARK AT BOTHELL LANDING

During construction of the Crossroads Project there is no access to the Park at Bothell Landing from the west end of NE 180th. Access is limited to the east end of NE 180th off Bothell Way NE/ Woodinville Dr. (SR 522). The park and the Lytle House will remain open during construction.



Bothell Parks and Recreation is partnering with Recreation Without Borders to offer fun and enriching family and adult trips! Owner Lauren Woodmansee has over 19 years experience in the field of Parks and Recreation providing quality trips and programs for individuals of all ages, interests and abilities. Recreation Without Borders specializes in trips, tours and adventures throughout the Northwest. *Registration fees include supervision, transportation and admission fees but do not include food, beverages or other purchases unless specifically noted.* Some offerings include detailed itineraries and/or supplies lists which will be available upon registration. **ALL TOURS DEPART FROM GRAVEL LOT BY LYTLE HOUSE.**

JANUARY

Winter Snowshoe Fun

Ages 12 & up – under 18 with adult supervision

Always wanted to try the wonderful sport of snowshoeing? Well here's your chance while getting a glimpse of how beautiful the surrounding Cascade Mountains can be in wintertime. Perfect for the beginner (or seasoned veteran), today's outing will cover basic snowshoeing techniques and practice simple winter safety skills while exploring gentle slopes and trails. Fee includes snowshoes, poles, and trail pass. *Please note: Exact location of the hike will depend upon recent snowfall and current weather and road conditions.* A complete supplies list will be available at registration. If time allows we will stop for a no-host treat on the way home.

Registrations must be received by Tuesday, Jan. 3

#9145 Sun 1/8 9:30am-5:30pm
\$65R/\$78NR

FEBRUARY

28th Annual Langley Mystery Weekend

Ages 12 & up - under 18 with adult supervision

Calling all you Agatha Christie and Sherlock Holmes wannabes! Join us as we travel via van and ferry to the quaint town of Langley on Whidbey Island. This entertaining event is a whodunit that involves the whole town! Once registered we'll each receive a copy of the Langley Gazette (published specifically for this event), an entry form and map. Then you're off on your own sleuthing throughout the town visiting the stores and cafes, interviewing the colorful locals and collecting your clues. After you've figured it all out you'll enter your best guess in a drawing for extraordinary prizes. Sound intriguing? Don't miss out on all the fun, fantastic food options and wonderful shopping. Bring money for a no-host lunch and purchases. Wear comfortable and weather appropriate clothing and walking shoes. *Registrations must be received by Friday, Feb. 17*

#9146 Sat 2/25 9:30am-5:30pm
\$65R/\$78NR

MARCH

Seattle Underground Tour and Pike Place Market

Ages 12 & up - under 18 with adult supervision

Today you will enjoy two of Seattle's most unique and famous attractions! First stop, the Underground Tour. This humorous stroll through Seattle's original downtown features a time-capsule view of life prior to the Great Fire of 1889. Tour guides will regale you with sidesplitting, true stories you won't believe or soon forget! Then we're off to the market and all its modern-day livelihood. Once here, everyone will have ample time for lunch, shopping and area exploration. Bring money for a no-host lunch and purchases. Wear comfortable and weather appropriate clothing and walking shoes. *Please note: the Underground Tour and Pike Place Market include walking and climbing some uneven stairs and pavement. Registrations must be received by Friday, Mar. 16*

#9148 Sun 3/24 10am-5pm
\$60R/\$72NR

WANTED: Dog Owners

Can't find a local park where your dog can be paw-loose and cat free? Then we double-dog dare you to join us in uniting dog owners in developing a community based organization responsible for fundraising, development and maintenance of an **off-leash dog park** right here in Bothell.

If your bark is bigger than your bite, and you enjoy a doggone good time, please contact Recreation Manager Pat Parkhurst at pat.parkhurst@ci.bothell.wa.us with your contact information. We will throw you a bone and hold an organizing meeting in early 2012.



CITY OF BOTHELL PARKS

For more information call City of Bothell Parks & Recreation at 425.486.7430 or visit www.myparksandrecreation.com

- ★ Picnic shelters available for rent
- ◆ Meeting room available for rent
- ◆ Fields available on reservation basis only
- ♣ Doug Allen Sportsfields formerly known as Westhill Sportsfields
- ♠ Tall Tree Park formerly known as Conifer View IV Park

		Amphitheater	Barbeque	Bike Trails	Drinking Fountain	Hiking Trails	Historical Features	Interpretive Nature Trail	Off-Street Parking	Picnic Shelter	Picnic Tables	Playground	Restrooms	Sportscourt	Sportsfield - Multi Purpose	Sportsfield - Soccer	Undeveloped	Water Access	Meeting Room	Administrative Office
Bloomberg Hill Park	20301 Hollyhills Drive NE									◆	◆			◆						
Blyth Park ★	16950 W. Riverside Drive		◆		◆	◆			◆	◆	◆	◆	◆						◆	
Brackett's Landing	11101 NE 174th St.			◆							◆								◆	
Brickyard Road Park	16800 Brickyard Road NE		◆								◆	◆		◆						
Cedar Grove Park ★	22421 9th Ave. SE		◆		◆	◆	◆		◆	◆	◆	◆	◆	◆	◆					
Centennial Park ★	1129 208th St. SE		◆		◆	◆			◆	◆	◆	◆	◆							
Conifer View Park	9055 NE 195th St.		◆							◆	◆			◆						
Doug Allen Sportsfields ♣♥	19417 88th Ave. NE		◆						◆				◆		◆	◆				
Haynes Open Space	20301 Bothell Everett Hwy.																◆			
Lytle House ◆	9929 NE 180th St.						◆		◆				◆						◆	◆
North Creek Sportsfields ♥	11800 North Creek Parkway S.			◆	◆	◆			◆		◆	◆			◆					
Park at Bothell Landing	9919 NE 180th St.	◆	◆	◆	◆	◆	◆	◆	◆	◆	◆	◆	◆						◆	
Red Brick Road Park	SR 522 & 96th Ave. NE					◆														
Royal Oaks Park	20144 106th Ave. NE		◆								◆	◆		◆						
Sammamish River Park/Trail	17995 102nd Ave. NE			◆	◆				◆		◆								◆	
Skate Park	9815 NE 188th St.							◆												
Stipek Park	1800 242nd St. SE		◆		◆	◆				◆	◆	◆	◆	◆						
Tall Tree Park ♠	19630 89th Pl. NE										◆	◆								
Triangle Park	Main St. & Bothell Way				◆	◆														
Volunteer Park	97th Ave. NE & NE 182nd St.										◆	◆		◆						

COMMUNITY CONTACTS

ORGANIZATION

Bothell City Hall
 Bothell Cougar Jr. Football Association
 Bothell Library
 Cottage Lake Swimming Pool
 Greater Bothell Chamber of Commerce
 Kenmore Park & Event Information
 King County Parks & Recreation
 North Bothell Little League
 Northlake Little League
 Northshore Girls Slowpitch Softball
 Northshore Little League
 Northshore Senior Center
 Northshore School Dist. Facility & Field Status
 Northshore Youth Basketball Association
 Northshore Youth Soccer Association
 Northshore YMCA
 Snohomish County Parks & Recreation
 Sno-King Amateur Hockey Association
 Teen Northshore

PHONE NUMBER

425.486.3256
 (ph. # not provided)
 425.486.7811
 206.296.2999
 425.485.4353
 425.398.8900
 206.296.8687
 (ph. # not provided)
 (ph. # not provided)
 425.398.7931 (voice mail)
 425.486.7333
 425.487.2441
 425.408.6020
 425.770.7766
 425.486.5106
 425.485.9797
 425.388.6600
 425.821.7133
 425.820.8227

WEBSITE

www.ci.bothell.wa.us
www.bcjfa@live.com
www.kcls.org/bothell
www.kingcounty.gov/cottagelakeswimmingpool
www.bothellchamber.com
www.cityofkenmore.com
www.kingcounty.gov/recreation/parks.aspx
www.northbothelllittleleague.org
www.eteamz.com/NorthLakell
www.ngssa.com
www.northshorell.com
www.northshoreseniorcenter.org
www.nsd.org
www.nybahoops.com
www.northshoresoccer.org
www.seattlemca.org/page
www.l.co.snohomish.wa.us/departments/parks
www.snokinghockey.com

REGISTRATION INFORMATION

Registrations NOW being accepted. Make checks payable to City of Bothell.

Call: 425.486.7430 for more information, or

Mail-in registration form to: Bothell Parks & Recreation, 18305 101st Ave. NE, Bothell, WA 98011, or

Walk-in registration form to: Bothell Parks & Recreation, 9929 NE 180th St., or

Register online at: www.bothellparks.net

Regional park info available at: www.myparksandrecreation.com

Office hours: 8 a.m. to 5 p.m. Closed 1 to 2:30 p.m. Fax registration form to: 425.483.8962

RESIDENT DISCOUNT FEE

City of Bothell Parks & Recreation strives to provide quality and affordable recreation opportunities to the community. In recognition that Bothell citizens support our Parks & Recreation services through their city taxes, the City offers its residents a discount on all fee-based recreation programs. *Not all persons with Bothell mailing addresses live within the city limits.* Not sure? Our Parks & Recreation staff will be able to assist you (425.486.7430). Those persons not living within the city limits are welcome to enjoy our activities at the rates listed.

Please Note: All participants are required to sign a hold harmless form prior to participating in any registered program. Parent or guardian signature is required for all participants under 18 years of age. Some class programs may require a separate hold harmless form to be signed due to the specific nature of that program.

ACCESSIBILITY

City of Bothell Parks and Recreation will make every effort to provide reasonable accommodation for people with special needs. Please contact us three weeks prior to the class starting to discuss accommodations.

REFUND POLICIES

Before you register for any class you should read and understand the following refund policies.

PROGRAMS AND ACTIVITIES

- Refund/credit granted if request is made at least five (5) business days prior to the start of class, less \$10 administrative fee.
- 100 percent refund if class is cancelled.
- Class withdrawal requested less than five (5) business days prior to the start of class will result in a credit/refund of 50 percent of the registration fee less a \$10 administrative fee per registrant per class.
- No refunds for classes costing less than \$10.
- No refunds/credits will be issued after a class has started.

SATISFACTION GUARANTEED

City of Bothell Parks & Recreation strives to provide the best possible recreational programs and to ensure customer satisfaction. If you are dissatisfied with the quality of the program, facility or instructor, you should contact the staff prior to the second class or within two days following a one day class so that your concerns can be quickly addressed.

NONDISCRIMINATION POLICY

City of Bothell Parks & Recreation does not discriminate on the basis of race, color, national origin, creed, or religion, sex or sexual orientation, age or disability.

PROGRAM LOCATIONS

Bothell Police Dept.
18410 101st Ave NE

Downtown Firehouse
10726 Beardslee Blvd.

Frank Love Elementary
303 224th St. SW

Lytle House
9929 NE 180th St.

Park at Bothell Landing
8919 NE 180th St.

Stipek Park
1800 242nd St. SE

MUST COMPLETE ALL INFORMATION

Adult/Guardian (if participant is a minor) _____
 Address _____ City _____ Zip _____
 Emergency Contact _____
 E-mail Address _____

Home Phone# _____
 Work Phone# _____
 Emergency Phone# _____

PARTICIPANT'S NAME	BIRTH M/D/Y	CLASS NAME	START DATE	FEE
1.				
2.				
3.				

Total Fees \$ _____

Hold Harmless Clause

I, the undersigned, parent/guardian, assume all risks and hazards incidental to participating in the activity and do hereby waive, release, absolve, indemnify and agree to hold harmless the City of Bothell, their supervisors, participants and instructors for any claim arising out of any injury to myself/child. I, the undersigned, parent/guardian of the participant, am fully aware of the potential dangers and risks inherent in this activity, including physical injury, death or other consequences that may arise or result directly or indirectly from participation in this activity. PHOTO/VIDEO RELEASE: I grant full permission to use any photographs, videotapes, motion pictures, recordings or any other record of this program promotion of the Bothell Parks & Recreation Division.

Signature X _____

METHOD	Cardholder
Visa	Card #
M/C	Expiration

Make Checks Payable to: City of Bothell Parks & Recreation
18305 101st Ave. NE Bothell, WA 98011 Fax: 425.483.8962



THANK YOU TO OUR COMMUNITY EVENT SPONSORS

We are ever grateful to the numerous businesses that stepped forward and helped fund our community events this year. ***Their financial support enabled us to bring the Community Egg Hunt, Bothell Fourth of July Parade, Music in the Park, RiverFest and Safe Halloween to Bothell's residents.*** Please let the sponsors know you appreciate their support when you frequent their establishments.



*Allstate Insurance Company
Bothell Pediatric & Hand Therapy
Evergreen Healthcare
Kaufman Chiropractic Center
Lakeshore Clinic
Pacific Medical Centers
Seattle Home Appliance
Snapdoodle Toys*

*Sundance Energy Services
Vertafore
Vineyard Park @ Bothell Landing
Uncle Peteza's Pizzeria
UW - Bothell
Whidbey Island Bank
4Culture*



City of Bothell Recreation Services is seeking sponsors for our 2012 event season. If you would like to support ***the Community Egg Hunt, Bothell Fourth of July Parade, Music in the Park, RiverFest or Safe Halloween,*** please contact Steve Dahl at 425.486.7430 for a sponsorship package.



CITY MANAGER MESSAGE

BE IN THE KNOW!

How to Get News
about the City of Bothell

There are now more ways than ever to get news about Bothell.

- The Bothell **BRIDGE**, which you are reading now, is mailed to all Bothell homes on a quarterly basis.
- Bothell's own television station, BCTV, airs on Channel 21 (Comcast) and Channel 26 (Frontier) within Bothell city limits and features scenes from community events, news, educational shows and city meetings.
- The City's website, www.ci.bothell.wa.us is a comprehensive source for information about city services from pet licensing to major construction projects.
- The City of Bothell is also on Facebook and Twitter, so come find us there.



Would you like to receive information right to your inbox? You are encouraged to sign up for the new e-newsletter. Every few weeks, you will receive a comprehensive email of the latest City of Bothell news, including events, construction information, project updates and more.

To sign up, click on the button that says "Sign Up to Get Bothell E-News" right on the City's homepage, www.ci.bothell.wa.us.

For more information about City of Bothell communications, please contact Public Information Officer Joy Johnston at 425-486-3256 or joy.johnston@ci.bothell.wa.us.

2011 in Review

Looking back at 2011, I am amazed by the changes that have taken place and what Bothell has accomplished. From road projects to new housing and shopping opportunities, from job growth to statewide awards, it has been an exciting year for our community.



City Manager Robert S. Stowe

To begin with, the first of many downtown projects is about to be completed. The \$21.6 million Wayne Curve project has been constructed to improve SR 522, relieve congestion, add dedicated lanes for mass transit, and create pedestrian walkways. Our sincere thanks go out to all of the drivers for their patience during this project and especially to the businesses who have hung in there despite the disruptive nature of construction. This project was designed to benefit Bothell as well as the region and your support and understanding is greatly appreciated.

Also finishing up this year is the 240th St. SE Bridge which has been replaced due to deteriorated pilings. The new bridge will be higher and will have a wider opening under the bridge in order to make the bridge less prone to flooding.

Throughout the year, there have been signs that Bothell is flourishing. UW Bothell's new student housing, Husky Village, opened in September and immediately filled with students. In November, Safeway opened a new shopping center along SR 527, one of only seven of this type of shopping center currently under development in North America. Safeway's investment in Bothell is proof that our City is growing despite a national economy that is slow to recover. And that's not the only indicator: earlier this year, it was announced that Google is bringing over 800 jobs to Bothell. Additionally, Bothell has been redesignated as an "Innovation Partnership Zone," and is considered a critical hub for bio tech and medical manufacturing in Washington State.

Throughout the year, Bothell was lauded for its downtown revitalization that is currently underway. Bothell received the AWC Municipal Excellence Award, the Governor's Smart Communities Award, and the PSRC VISION 2040 Award. These awards serve as an important reminder that what we have accomplished and what we are working toward as a community is extraordinary.

I would be remiss if I did not mention another of Bothell's efforts and that is the annexation of 22,000 residents of unincorporated Snohomish County. Of course, we are disappointed that the measure failed. This vote was requested by more than a thousand future Bothell citizens in our growth area who want the services the City can offer them. What is important to us now, as public servants, is to use these election results to better understand what is important to these residents and how they perceive the City's ability to serve them. That way, concerns can be addressed for a time if citizens join Bothell in the future. Whenever that is, we will be prepared and excited to welcome them into the Bothell community.

Looking ahead, we have other important changes to look forward to, including the new McMenamins hotel and the completion of the Crossroads project. There is much more to come and I look forward to celebrating Bothell's continued successes with you.

Major Projects Near Completion

As the end of the year approaches, so does the completion of two major road projects in Bothell. One of the projects, Wayne Curve, will improve transit times and relieve congestion along SR 522. The other project, the 240th Street SE Bridge, replaces a bridge that had deteriorated to the point where it was no longer safe to drive over it. Together, the projects represent about \$23.5 million in infrastructure investments.



Wayne Curve

SR 522 at Wayne Curve is getting very close to completion. The final paving was completed in September, and median work west of 96th Ave NE was completed in October. The project improves capacity and enhances the west entrance to the City on SR 522 (NE Bothell Way)

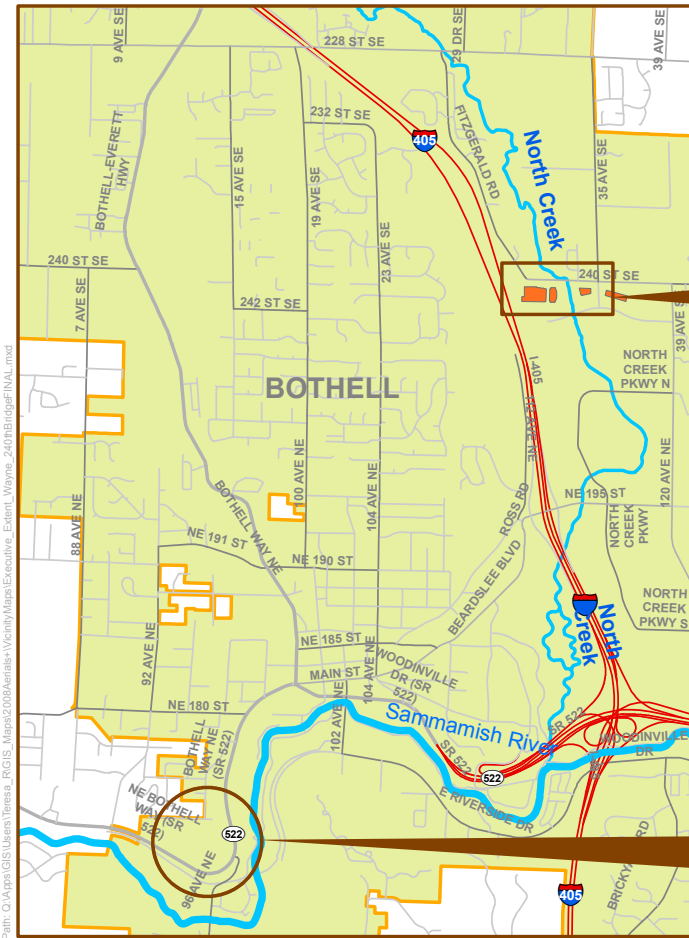
at the 96th Avenue NE intersection (also known as Wayne Curve). This project launched construction activities for the downtown revitalization effort when it broke ground in April 2010.

The addition of transit queue lanes in each direction will allow mass transit to by-pass the traffic signals in the westbound direction or have signal priority in the eastbound direction at 96th Ave. NE after King County Metro installs its transit signal priority system. Other work in this section includes installation of center medians, asphalt and concrete paving, a new gateway sign, and improvements in the Red Brick Road Park area. This project is funded by the City, Sound Transit, Washington State Department of Transportation, the State Transportation Improvement Board (state gas tax), Federal Highway Administration, and King County. The project is also a recipient of the Urban Vitality grant through the State Public Works Board, which administers Washington State taxpayer funds. The project is expected to be completed in mid-December.

240th Street SE Bridge Replacement

North and west of the Wayne Curve project along 240th Street SE is a bridge replacement project that has been underway since July 2011. Due to the deterioration of timber piles, the 240th Street SE Bridge over North Creek was closed in October 2010. The existing bridge was built in 1962.

Construction in the water of North Creek is limited by a window of time in which fish are not swimming in the creek. Fortunately, construction in the water was completed and wrapped up before the “fish window” ended on September 30. Temporary piles in the water are in place, and permanent pile-driving outside of the water took place in October. The temporary supports will be removed when the bridge is self-supporting and when it is safe to work in the water again during next year’s “fish window.”

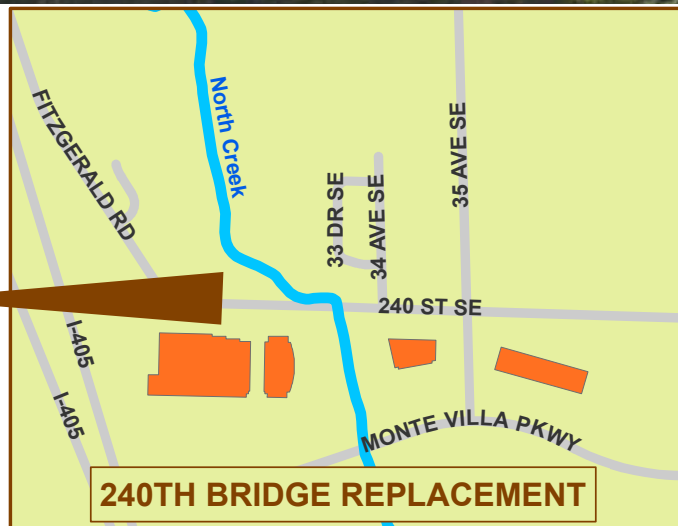


2011 PROJECTS NEARING COMPLETION

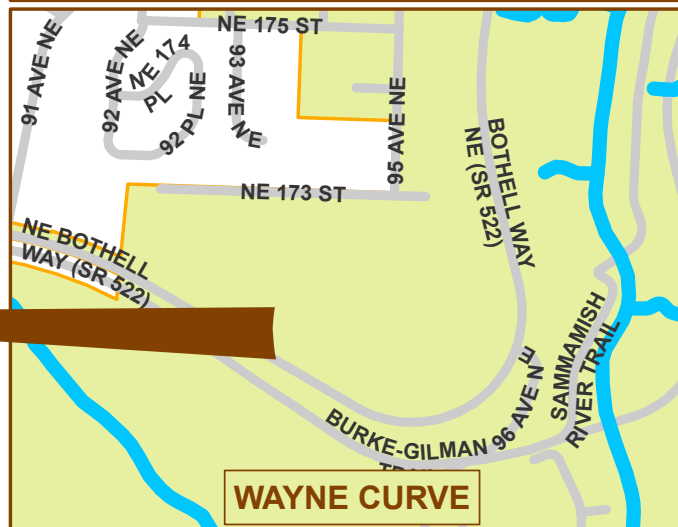


The cost of construction is covered by City funds and a grant from the Federal Highway Bridge Program (HBP), formerly the Federal Highway Bridge Replacement and Rehabilitation Program (HBRRP). The new bridge will be a higher 76-ft long cast-in-place post tensioned concrete bridge and will be longer in order to provide a wider opening under the bridge to

The supporting structure of the new bridge at 240th St. SE was under construction this fall.



240TH BRIDGE REPLACEMENT



WAYNE CURVE

meet current FEMA flood level requirements. The nearby trail bridge that carries the regional North Creek Trail will also be replaced with a 74-ft long prefabricated bridge with a longer span to minimize hydraulic and environmental impacts of replacing the vehicular bridge. The roadway and trail are scheduled to reopen to the public by the end of January 2012.

Crossroads Update

The Crossroads project which will realign SR 522 to the south is expected to proceed with its final construction in Spring 2012. The project has been delayed a construction season due to environmental permitting requirements that the City is currently working out with the US Army Corps of Engineers. In addition to improving mobility and safety, realignment of SR 522 will create two new downtown blocks that will extend Main Street with pedestrian-oriented development. The \$55.4 million project is fully funded. Funding sources include City funds, grants, the Local Infrastructure Financing Tool (LIFT) Program and Brightwater mitigation funds.

For more information about these projects or other City of Bothell projects, please visit www.ci.bothell.wa.us and click on the orange construction cone.





Please Think Before You Pour Cooking Grease Down the Drain

It's holiday time which often means lots of delicious food and cooking. It's also a good time to remind everyone that we need your help to keep Bothell's sewer system working its best and keep repair costs down. Fats, oils and grease from cooking cause up to a third of all sewage overflow problems in Bothell. This can result in potential public health issues and pollution problems.

Fats, oils and grease are found in common food and food ingredients such as meat, fish, butter, cooking oil, mayonnaise, milk, gravies, sauces and food scraps. If poured down the drain or into your garbage disposal, fats, oils and grease will build up over time by sticking to your side sewer. This could eventually cause an expensive sewer back up into your home or our natural water system.

Fats, oils and grease from cooking cause up to a third of all sewage overflow problems in Bothell.

The results of a grease-blocked sewer pipe can be:

- **Sewage overflows in your home or your neighbor's home.**
- **Expensive and unpleasant cleanup that often must be paid for by the property owner.**
- **Possible contact with disease-causing organisms.**
- **An increase in operation and maintenance costs by the City sewer system and the regional treatment system, which causes higher sewer bills for customers.**

Following a few simple steps, you can help prevent sewer backups and spills:

- 1** Pour cooled fats, oils and grease into a covered, disposable container and throw it into your garbage.
Never pour fats, oils or grease down sink drains or toilets.
- 2** Soak up remaining oils and grease.
- 3** Before you wash dishes, scrape food scraps, fats, oils and grease into your compost or trash.
- 4** Avoid putting fats, oils and grease down your garbage disposal. Use sink strainers to catch any remaining food waste while washing dishes.

Watch a video on how to get rid of fats, oils and grease the right way.

Go to www.youtube.com/CityofBothell



By keeping fats, oils and grease out of the drain, you directly help the City of Bothell keep costs low for everyone!

CITY COUNCIL HIGHLIGHTS

Council meets the first three Tuesdays of the month, 6 p.m., Municipal Court Building, 10116 NE 183rd St., unless otherwise noted.

COUNCIL ACCOMPLISHMENTS

SEPTEMBER 2011

- ☑ Approved Interlocal Agreement for the Snohomish County Regional Drug and Gang Task Force;
- ☑ Adopted ordinance increasing the City's Local Infrastructure Financing Tool (LIFT) Bond Anticipation Note to \$30 million.

OCTOBER 2011

- ☑ Held public hearing and adopted ordinance approving the Bloomberg Hill Island Annexation;
- ☑ Took action to reaffirm the City of Bothell's intent to staff the Snohomish County Fire Protection District 1's existing Station 22 following annexation of the North, East, and West of Bothell Annexation (NEWBA);
- ☑ Took action to support the City of Bothell's participation in the South Snohomish County Regional Fire Authority planning process;
- ☑ Held study sessions concerning 1) potential use of Transfer of Development Rights (TDR) to preserve a portion of the North Creek Forest; 2) pet waste ordinance; 3) 1st Lt. Nicholas Madrazo Memorial Park master plan.

AGENDA ITEMS

Agendas subject to change. For an updated agenda or minutes and video-streaming of meetings, please visit www.ci.bothell.wa.us/CityServices/CityCouncil.

DECEMBER 2011 *Items for the City Council's consideration or action:*

- ☐ 2012 legislative priorities;
- ☐ Speed limit change in the Maywood Hill area;
- ☐ Policy regarding sharrow;
- ☐ Construction contract for the Bothell Way NE Drainage Improvements Project;
- ☐ Ordinance concerning special event permit code amendment;
- ☐ Public hearing regarding the 2012-2017 Transportation Improvement Program (TIP);
- ☐ Public hearing regarding amendment to the 2011-2012 biennial budget.

JANUARY 2012 *Items for the City Council's consideration or action:*

- ☐ Installation of Council Members for Council Position Nos. 2, 4, and 6;
- ☐ Election of Mayor and Deputy Mayor;
- ☐ Appointment of Council Committee assignments.

PLEASE APPLY! Board & Commission Openings

Citizens are invited to apply for various board and commission positions. The application period for these positions opens on Wednesday, January 4, and closes at 5 p.m. on Friday, February 10, 2012. Applications will be available online at www.ci.bothell.wa.us or at the City Clerk's office, Bothell City Hall, 18305 101st Avenue NE, Bothell, WA 98011. The office may be reached at 425.486.3256.

Appointments to the positions will take effect on April 1, 2012. Interviews before the City Council are tentatively scheduled for Tuesday, March 13, 2012, with appointments tentatively scheduled for Tuesday, March 20, 2012.

Positions are available on the following boards and commissions:

- Civil Service Commission
- Landmark Preservation Board
- Library Board
- Lodging Tax Advisory Committee
- Parks & Recreation Board
- Planning Commission
- Shorelines Board

Boards and commissions serve as advisory groups to the City Council and have the responsibility to study issues in depth to present reports and recommendations to the Council. For more information about the specific vacancies, membership requirements, meeting times, and locations for the various boards and commissions, visit www.ci.bothell.wa.us or contact the City of Bothell City Clerk Division at 425.486.3256.

WINTER SAFETY

With predictions of a cold, wet winter, Bothell could see anything from windstorms to snow in the coming months. To help you stay safe and warm, here are some tips for facing the perils of winter weather:



Frozen Pipes

After a bitterly cold night, you turn on your tap and instead of a steady gush of water you get a sickly trickle followed by... nothing. Since water expands when it freezes and pipes don't, a frozen pipe is in danger of bursting. It needs to be thawed.

How to Prevent Frozen Pipes

- Drain water from swimming pool and water sprinkler supply lines following manufacturer's or installer's directions.
- Remove, drain, and store hoses used outdoors. Close inside valves supplying outdoor hose bibs. Open the outside hose bibs to allow water to drain. Keep the outside valve open so that any water remaining in the pipe can expand without causing the pipe to break.
- Check around the home for other areas where water supply lines are located and are in unheated areas. Both hot and cold water pipes in these areas should be insulated.
- Consider installing specific products made to insulate water pipes like a pipe sleeve or installing UL-listed heat tape, heat cable, or similar materials on exposed water pipes. Newspaper can even provide some degree of insulation and protection to exposed pipes.
- When the weather is very cold outside, let the cold water drip from the faucet served by exposed pipes. Running water through the pipe – even at a trickle – helps prevent pipes from freezing because the temperature of the water running through it is above freezing.

Using Your Generator Safely

A generator can be an effective energy source during a power outage, but using it safely requires your attention. Always read the directions that come with the device. Never use a portable generator in a garage, carport, basement, crawlspace or other enclosed or partially-enclosed area, even with ventilation. Opening doors and windows or using fans will not prevent carbon monoxide (CO) buildup in the home. *Remember: You cannot smell carbon monoxide.*

Using your Generator Outdoors

- Place the generator away from windows, doors, and vents that could allow carbon monoxide to come indoors.
- To avoid electrocution, keep the generator dry and do not use in rain or wet conditions. Operate it on a dry surface under an open canopy-like structure. Make sure your hands are dry before touching the generator.
- Use and store generator fuel safely.
- Turn the generator off and let it cool before refueling. Gasoline spilled on hot engine parts could ignite.
- Store generator fuel in an approved safety can outside of living areas. Local laws may restrict use or storage of fuel. Ask your local fire department for information.
- If you spill fuel, or do not seal its container properly, invisible vapors can travel along the ground and be ignited by an appliance's pilot light or arcs from electric switches in the appliance.
- Use only the type of fuel recommended in the generator instructions or on its label.
- Don't overload your generator.
- Determine the amount of power you



will need. If you can't determine the amount of power you will need, ask an electrician.

- Never try to power your house by plugging the generator into a wall outlet, a practice known as "back feeding." It can lead to the electrocution of utility workers or neighbors served by the same utility transformer.
- The only safe way to connect a generator to house wiring is to have a qualified electrician install a power transfer switch.

Snow and Ice on Roofs

Did you know? A cubic foot of snow can weigh from seven pounds for snow that is new and dry up to 30 pounds for old, compacted snow. Rain falling on accumulated snow will add even more weight. The combination of these factors may cause an excess of snow loading on many roofs.

If Bothell gets hit with a lot of snow this year, watch for these warning signs of an overloaded roof:

- Severe roof leaks, indicating torn roof membranes.
- Ripples or bends in metal supports.
- Loud popping noises emanating from the building structure.
- Water ponds in areas where it never accumulated before.
- Obvious deformities in the roof.

Getting Information in an Emergency

A windstorm hits. Trees are down. Roads are blocked. The power is out. How do you get information about the situation? Every emergency poses unique communication challenges. If the power is out, you probably will have difficulty checking information on the internet from your computer, though you might be able to check from a smart phone. Following a disaster, cell phone lines could be overwhelmed so it might be difficult to make calls, though you might be able to send and receive text messages.

Whatever the emergency, if you are looking for information, the City of Bothell is trying to get information to you. Here are ways to find information following a disaster:

1. Call the City of Bothell Emergency Update Hotline: **425.487.5132**
2. Check the City of Bothell Website: **www.ci.bothell.wa.us**
3. Click on the button to "Sign Up for Bothell E-News" on the City website
4. Follow the City of Bothell on Twitter and/or Facebook
5. Look for flyers and postings on City posting boards throughout Bothell
6. Listen for reports on major news radio stations (KOMO, KIRO)
7. Talk to your neighbors to share information

Other resources:

Regional Alert Website: **www.rpin.org**

Puget Sound Energy: **www.pse.com, 1-888-225-5773**



9-1-1 Phones Installed at all Bothell Fire Stations

****It is important to remember in an emergency, it is always best to call 9-1-1 from your location.****

Recently, 9-1-1 phones were installed at all three fire stations. Each fire station has a red box near the front entrance labeled EMERGENCY intended for use when firefighters are off-site. There is a red button located inside the box which contacts 9-1-1 directly. Citizens are not being directed to use this method as a primary way to call 9-1-1.



Snow and Ice on Roofs Continued from page 20

What to Do if You Suspect Overloading

Most roofing contractors are equipped to handle snow removal from the roof of your home and buildings.

Another option is to remove the snow yourself. The best way to do this is to get up on your roof and push the snow off with a broom or shovel. It is important to use ladders, safety ropes and take necessary precautions. Snow rakes also can be used to remove snow. When using a snow rake, use extreme caution when working near overhead electrical power lines. Also, avoid excessive scraping on the roof or trying to chip off any ice.

For more tips on preparing for and handling weather emergencies, please visit the City's website www.ci.bothell.wa.us and query "Emergency Preparedness."

FEBRUARY IS BOTHELL HEART MONTH

In response to the American Heart Association's designation of February as American Heart Month, the City of Bothell is continuing a special community awareness campaign called "Bothell Heart Month." The campaign will focus on heart health awareness by placing Firefighter/EMT's in high traffic areas throughout the community to offer free blood pressure and blood sugar screenings.

Heart disease is the leading cause of death in the United States, with diabetes not far behind. The Bothell Heart Month campaign will evaluate willing participant's blood pressure and blood sugar, provide information about risks, and inform them of warning signs.

Free blood pressure and blood sugar screenings will be provided at all fire stations and other locations throughout the City of Bothell. For a list of community event dates and locations, visit www.ci.bothell.wa.us.





Be **GREEN** About Your Tree this Holiday Season

COMPOST YOUR TREE

When the holidays are over, you can give your tree a new life as soil by composting it. There are two options for composting. You can support your local Boy Scout Troop and Operation Dry Needles by using their tree collection program. For more information on the program, please visit the City's website (www.ci.bothell.wa.us) and query "tree collection." Or, you can remove all the decorations and put trees 6 feet or smaller out by your yard debris bin. More information about this program is available at wmnorthwest.com/bothell.

PURCHASE A POTTED CHRISTMAS TREE

Instead of cutting a tree down this year, purchase a potted tree and plant it after the holidays. Or, donate to the City and we will plant it for you! Many nurseries sell potted conifers in our area. For a complete list go to www.ci.bothell.wa.us and search "potted Christmas tree."

WANT TO RENT A TREE THIS YEAR?

On December 17, from 10 a.m. – 3 p.m., the Adopt A Stream Foundation will be having a Christmas Tree Rental and Holiday Extravaganza at their Northwest Stream Center in Everett. Approximately 200 live trees that are between 2.5 and 4 feet high will be available to rent. The majority of the trees will be Sitka Spruce, Western Red Cedar, and a few Douglas Firs. They will provide directions on how to keep the trees alive and well so that they can be returned in good shape. Then, the returned live trees will be planted along streams that flow into the North End of Lake Washington, as well as Puget Sound Coastal Creeks between Shoreline and Mukilteo. For more details, visit their website at: www.streamkeeper.org

How to License Your Pet in Bothell

Three different options are available for licensing your Bothell pet:

ONLINE To license your dog or cat online, go to www.PetData.com and select Bothell from the customer service drop-down menu. Then click on 'Online Licensing' on the upper left side of the screen. You can license multiple pets at the same time and easily upload required documents. All major credit cards are accepted, and a small convenience fee will apply per transaction.

BY MAIL To license by mail, simply mail a copy of applicable documentation, along with your check payable to "City of Bothell," to Bothell Animal Licensing, C/O PetData, PO Box 141929, Irving, TX 75014.

IN PERSON A pet may also be licensed in person at Bothell City Hall between 8 a.m. and 5 p.m. Monday through Friday. Please be sure to bring proof of your pet's spay or neuter with you. Bothell City Hall is located at 18305 101st Avenue NE, across from the Bothell Police Department. Payment in person is by check or cash only.



Bothell's Beckstrom Cabin



The Beckstrom Cabin, now standing at the Park at Bothell Landing, was built in 1884 and housed Andrew and Augusta Beckstrom and their 16 children. Their third child, John, was born in the cabin. The Beckstroms were one of the first families to settle on the Sammamish River, arriving with Andrew's father, Olaf, in 1883. Their cabin is significant as an illustration of the earliest housing during the initial settlement of Bothell.

The one-story cabin bears the features of Pacific Northwest early settlers' homes. It is approximately 16 feet wide and 12 feet deep and placed on a wood block foundation. The medium-pitch, side-gabled roof is covered with wood shakes. The squared cedar logs comprising the walls are dovetailed with Norwegian joints and the cracks are chinked. Roof gable ends are faced with horizontal shiplap siding. Windows are double hung with two panes of glass

in each. The primary entry door is constructed of vertical wood boards.

Andrew Beckstrom was born in Sweden in 1852. Andrew was a native of Smoland, Sweden and worked as a painter. He came to Chicago when he was 18, where he took business classes at night school. He moved to Topeka, Kansas in 1871 and married Augusta Nelson there in 1879. She was the daughter of Andrew and Christina Nelson and her family came to America in 1868. While in Topeka, Andrew befriended Peter John Quartman and his family. The Beckstrom and Quartman families immigrated to Seattle in 1883 by living in a train box car and then on a boat for the journey. Andrew and Peter worked in Seattle but filed land claims in what is now Bothell even though there were

no roads to the area. They purchased a rowboat, added a sail, and packed necessities with their family members for the trip up the Sammamish River to their new home. The land had to be cleared and crops planted as the Beckstroms constructed their cabin and crude furniture at the original homestead site off 100th Avenue NE and north of NE 195th Street - the present-day site of St. Brendan's Catholic Church. While forging a life in the wilderness, the Beckstroms shaped Bothell as they were actively involved with the school board, the Swedish Lutheran Church, the Masons and Eastern Star.

In 1969, the Beckstrom Cabin was relocated to the rear of 10222 Main Street. In 1978 it was relocated again to the Park at Bothell Landing. Alterations include replacement roofing, new foundation, and new window glass.



Located in the Park at Bothell Landing, NE 180th Street. Placed on Washington Heritage Register and City of Bothell's Local Register of Historic Landmarks in 1994.

The Landmark Preservation Board is responsible for identifying and actively encouraging the conservation of the City's historic landmarks.

For more information about the Landmark Preservation Board, contact Community Development at commplanning@ci.bothell.wa.us or 425-486-8152.



City of Bothell™
 18305 101st Ave. NE
 Bothell, WA 98011

PRSR STD
 US Postage
 PAID
 Bothell, WA
 Permit #104

ECRWSS
 POSTAL CUSTOMER

WINTER Calendar

DECEMBER

- 3** Tree Lighting and Santa's Arrival at Country Village
- 6** City Council Meeting, 6 pm, Bothell Municipal Court
- 13** City Council Meeting, 6 pm, Bothell Municipal Court
- 20** City Council Meeting, 6 pm, Bothell Municipal Court
- 26** Christmas (observed), City Offices Closed

JANUARY

- 2** New Year's (observed), City Offices Closed
- 3** City Council Meeting, 6 pm, Bothell Municipal Court
- 10** City Council Meeting, 6 pm, Bothell Municipal Court
- 16** Martin Luther King, Jr. Day (observed), City Offices Closed
- 17** City Council Meeting, 6 pm, Bothell Municipal Court

FEBRUARY

HEART MONTH: FREE BLOOD PRESSURE SCREENING

- 7** City Council Meeting, 6 pm, Bothell Municipal Court
- 14** City Council Meeting, 6 pm, Bothell Municipal Court
- 20** President's Day, City Offices Closed
- 21** City Council Meeting, 6 pm, Bothell Municipal Court

